



**VALIADIS**  
HELLENIC MOTORS

# K series







# K-series

## Technical description

### IEC 80-560

Up to 3kW (4HP): 380-420 / 220-240 VY/Δ 50Hz

From 4kW (5.5HP): 660-725 / 380-420 VY/Δ 50Hz

### Applications

- Pumps
- Blowers
- Conveyor
- Textiles
- Compressors
- Marine duty
- Gears

### Standard features

- Heavy duty design cast iron housing motor (feet integral with the casing)
- IP55 protection degree
- Insulation class F, temperature rise 80°C
- Standard PTC protection in the winding (1 per phase series connected)
- Standard oil seals in both DE and NDE sides
- Top mounted terminal box (with the possibility of rotation by 180°)
- SKF or NSK bearings
- Regreasable bearings from frame size 160 and above
- RAL 5010, blue color

### Optional features

- Special voltages and frequency
- Class H insulation
- Brake up to frame 280
- Forced cooling for constant torque operation through frequency inverter
- IP56 / IP65 protection
- Right or Left-hand side terminal box
- PT100 in the winding and bearings
- Frame reduced motors (non-IEC)
- Drip cover (canopy) for shaft down applications
- Anticondensation heaters
- Encoder
- Insulated bearing
- Roller bearings on drive end
- Double shaft
- Epoxy resin encapsulated terminal box
- Epoxy resin encapsulated winding
- Silicon encapsulated terminal box
- Cable execution (with terminal box or directly connected)
- Additional terminal box

# K-series

Three-phase motors with squirrel cage, protection degree IP55

**2 POLES-3.000 Rpm**  
 380-420/220-240 VY/Δ 50 Hz  
 660-725/380-420 VY/Δ 50 Hz  
 Insulation class F

| TYPE    | Power |      | Speed | Efficiency | Power Factor | Rated current (400V) | Nominal Torque | Moment of inertia GD <sup>2</sup> /4 | Starting current ratio | Starting Torque ratio | Break-down Torque | Net Weight |
|---------|-------|------|-------|------------|--------------|----------------------|----------------|--------------------------------------|------------------------|-----------------------|-------------------|------------|
|         | KW    | HP   | RPM   | %          | cosφ         | A                    | Nm             | kgm <sup>2</sup>                     | Ip/In                  | Mp/Mn                 | Mm/Mn             | kg         |
| K80-2   | 0,75  | 1    | 2830  | 75,8       | 0,83         | 1,7                  | 2,5            | 0,0008                               | 7,0                    | 3,10                  | 2,90              | 13         |
| K80-2   | 1,1   | 1,5  | 2830  | 76,1       | 0,84         | 2,5                  | 3,7            | 0,0009                               | 6,7                    | 2,90                  | 3,00              | 15         |
| K90S-2  | 1,5   | 2    | 2840  | 79,3       | 0,84         | 3,3                  | 5,0            | 0,0012                               | 6,8                    | 3,00                  | 3,00              | 20         |
| K90L-2  | 2,2   | 3    | 2840  | 81,5       | 0,85         | 4,6                  | 7,4            | 0,0015                               | 6,9                    | 3,40                  | 2,90              | 23         |
| K100L-2 | 3     | 4    | 2860  | 82,7       | 0,87         | 6,0                  | 10             | 0,0030                               | 7,2                    | 2,90                  | 2,90              | 30         |
| K112M-2 | 4     | 5,5  | 2880  | 85,3       | 0,88         | 7,7                  | 13             | 0,0050                               | 6,9                    | 2,38                  | 3,07              | 40         |
| K132S-2 | 5,5   | 7,5  | 2900  | 89,4       | 0,88         | 10,1                 | 18             | 0,0100                               | 7,0                    | 2,30                  | 2,85              | 54         |
| K132S-2 | 7,5   | 10   | 2900  | 88,6       | 0,88         | 13,9                 | 25             | 0,0120                               | 6,8                    | 2,27                  | 3,08              | 60         |
| K160M-2 | 11    | 15   | 2930  | 89,4       | 0,88         | 20,2                 | 36             | 0,0300                               | 7,3                    | 2,40                  | 3,09              | 99         |
| K160M-2 | 15    | 20   | 2930  | 91,2       | 0,89         | 27                   | 49             | 0,0450                               | 7,1                    | 2,27                  | 3,07              | 110        |
| K160L-2 | 18,5  | 25   | 2930  | 92,7       | 0,89         | 32                   | 60             | 0,0550                               | 6,8                    | 2,29                  | 2,70              | 127        |
| K180M-2 | 22    | 30   | 2940  | 91,0       | 0,9          | 39                   | 71             | 0,0760                               | 7,6                    | 3,10                  | 3,14              | 167        |
| K200L-2 | 30    | 40   | 2940  | 90,7       | 0,9          | 53                   | 97             | 0,1240                               | 7,2                    | 2,86                  | 3,09              | 220        |
| K200L-2 | 37    | 50   | 2950  | 91,6       | 0,89         | 66                   | 120            | 0,1390                               | 7,2                    | 2,80                  | 2,92              | 242        |
| K225M-2 | 45    | 60   | 2970  | 93,1       | 0,9          | 78                   | 145            | 0,2330                               | 7,1                    | 2,98                  | 3,04              | 281        |
| K250M-2 | 55    | 75   | 2970  | 92,2       | 0,9          | 96                   | 177            | 0,3120                               | 7,3                    | 2,39                  | 3,01              | 373        |
| K280S-2 | 75    | 100  | 2970  | 95,0       | 0,9          | 127                  | 241            | 0,5970                               | 6,2                    | 2,20                  | 2,70              | 477        |
| K280M-2 | 90    | 125  | 2970  | 94,2       | 0,91         | 152                  | 289            | 0,6750                               | 6,2                    | 2,10                  | 2,60              | 516        |
| K315S-2 | 110   | 150  | 2980  | 95,2       | 0,91         | 184                  | 353            | 1,1400                               | 7,1                    | 2,32                  | 2,81              | 792        |
| K315M-2 | 132   | 180  | 2980  | 95,8       | 0,91         | 219                  | 423            | 1,1900                               | 6,6                    | 2,32                  | 2,68              | 828        |
| K315L-2 | 160   | 220  | 2980  | 96,2       | 0,92         | 261                  | 513            | 1,7600                               | 6,9                    | 2,17                  | 2,87              | 932        |
| K315L-2 | 200   | 270  | 2980  | 95,3       | 0,92         | 330                  | 641            | 2,0200                               | 6,5                    | 2,29                  | 2,91              | 1.044      |
| K355M-2 | 250   | 340  | 2980  | 95,9       | 0,92         | 409                  | 801            | 3,5600                               | 6,6                    | 2,20                  | 2,88              | 1.638      |
| K355L-2 | 315   | 430  | 2980  | 97,0       | 0,92         | 510                  | 1.009          | 3,8490                               | 7,8                    | 1,70                  | 4,10              | 1.798      |
| K355L-2 | 355   | 480  | 2975  | 96,0       | 0,89         | 600                  | 1.140          | 4,12                                 | 5,4                    | 1,61                  | 2,70              | 1.834      |
| K400-2  | 400   | 540  | 2975  | 96,0       | 0,91         | 660                  | 1.284          | 5,80                                 | 7,7                    | 1,71                  | 2,90              | 3.000      |
| K400-2  | 450   | 600  | 2975  | 96,3       | 0,91         | 741                  | 1.445          | 5,90                                 | 6,8                    | 1,60                  | 2,00              | 3.100      |
| K400-2  | 500   | 680  | 2975  | 96,3       | 0,92         | 815                  | 1.605          | 6,40                                 | 6,8                    | 1,60                  | 2,00              | 3.150      |
| K400-2  | 560   | 760  | 2980  | 96,4       | 0,92         | 911                  | 1.795          | 8,60                                 | 7,0                    | 1,50                  | 2,00              | 3.200      |
| K400-2  | 630   | 850  | 2980  | 96,4       | 0,92         | 1025                 | 2.019          | 9,60                                 | 7,0                    | 1,50                  | 2,00              | 3.500      |
| K400-2  | 710   | 965  | 2980  | 96,5       | 0,92         | 1159                 | 2.275          | 11,00                                | 7,0                    | 1,50                  | 2,00              | 3.660      |
| K450-2  | 800   | 1090 | 2985  | 96,5       | 0,92         | 1306                 | 2.559          | 19,00                                | 7,0                    | 1,00                  | 2,00              | 4.400      |
| K450-2  | 900   | 1225 | 2985  | 96,7       | 0,92         | 1466                 | 2.879          | 21,00                                | 7,0                    | 1,00                  | 2,00              | 4.650      |
| K450-2  | 1000  | 1360 | 2985  | 96,7       | 0,92         | 1629                 | 3.199          | 23,00                                | 7,0                    | 1,00                  | 2,00              | 4.950      |

# K-series

Three-phase motors with squirrel cage, protection degree IP55

**4 POLES-1.500 Rpm**  
 380-420/220-240 VY/Δ 50 Hz  
 660-725/380-420 VY/Δ 50 Hz  
 Insulation class F

| TYPE    | Power |      | Speed<br>Rpm | Efficiency<br>% | Power<br>Factor<br>cosφ | Rated<br>current<br>(400V)<br>Amp | Nominal<br>Torque<br>Nm | Moment<br>of inertia<br>GD <sup>2</sup> /4<br>Kgm <sup>2</sup> | Starting<br>current<br>ratio<br>Ip/In | Starting<br>Torque<br>ratio<br>Mp/Mn | Break-<br>down<br>Torque<br>Mm/Mn | Net<br>Weight<br>Kg |
|---------|-------|------|--------------|-----------------|-------------------------|-----------------------------------|-------------------------|--|---------------------------------------|--------------------------------------|-----------------------------------|---------------------|
|         | KW    | HP   |              |                 |                         |                                   |                         |  |                                       |                                      |                                   |                     |
| K80-4   | 0,55  | 0,75 | 1390         | 69,2            | 0,75                    | 1,5                               | 3,8                     | 0,0018   | 5,1                                   | 2,40                                 | 2,80                              | 13                  |
| K80-4   | 0,75  | 1    | 1390         | 74,5            | 0,76                    | 1,9                               | 5,2                     | 0,0021   | 4,9                                   | 3,00                                 | 2,70                              | 15                  |
| K90S-4  | 1,1   | 1,5  | 1390         | 74,4            | 0,77                    | 2,8                               | 7,6                     | 0,0021   | 5,4                                   | 2,50                                 | 2,50                              | 20                  |
| K90L-4  | 1,5   | 2    | 1390         | 77,5            | 0,79                    | 3,5                               | 10,3                    | 0,0027   | 5,9                                   | 3,20                                 | 2,60                              | 24                  |
| K100L-4 | 2,2   | 3    | 1410         | 80,5            | 0,81                    | 4,9                               | 15                      | 0,0054   | 6,6                                   | 2,70                                 | 2,80                              | 29                  |
| K100L-4 | 3     | 4    | 1410         | 81,3            | 0,82                    | 6,5                               | 20                      | 0,0067   | 6,5                                   | 2,70                                 | 2,90                              | 32                  |
| K112M-4 | 4     | 5,5  | 1435         | 80,1            | 0,82                    | 8,8                               | 27                      | 0,0086   | 6,8                                   | 2,40                                 | 3,20                              | 42                  |
| K132S-4 | 5,5   | 7,5  | 1440         | 86,3            | 0,83                    | 11,1                              | 36                      | 0,021  | 7,4                                   | 2,20                                 | 3,50                              | 57                  |
| K132M-4 | 7,5   | 10   | 1440         | 93,6            | 0,81                    | 14,3                              | 50                      | 0,029  | 7,7                                   | 2,60                                 | 3,50                              | 69                  |
| K160M-4 | 11    | 15   | 1460         | 89,3            | 0,84                    | 21,2                              | 72                      | 0,075  | 7,3                                   | 2,37                                 | 2,90                              | 107                 |
| K160L-4 | 15    | 20   | 1485         | 91,5            | 0,84                    | 28,2                              | 96                      | 0,092  | 8                                     | 2,55                                 | 3,50                              | 129                 |
| K180M-4 | 18,5  | 25   | 1465         | 91,2            | 0,86                    | 34                                | 121                     | 0,139  | 6,9                                   | 2,13                                 | 3,09                              | 162                 |
| K180L-4 | 22    | 30   | 1470         | 92,0            | 0,86                    | 40                                | 143                     | 0,158  | 7,6                                   | 2,59                                 | 3,27                              | 172                 |
| K200L-4 | 30    | 40   | 1480         | 92,0            | 0,86                    | 55                                | 194                     | 0,262  | 6,3                                   | 2,01                                 | 2,61                              | 224                 |
| K225S-4 | 37    | 50   | 1480         | 93,0            | 0,87                    | 66                                | 239                     | 0,406  | 7                                     | 2,2                                  | 2,97                              | 277                 |
| K225M-4 | 45    | 60   | 1480         | 94,3            | 0,87                    | 79                                | 290                     | 0,469  | 6,7                                   | 1,84                                 | 2,80                              | 302                 |
| K250M-4 | 55    | 75   | 1480         | 94,1            | 0,87                    | 97                                | 355                     | 0,660  | 6                                     | 2,3                                  | 2,54                              | 383                 |
| K280S-4 | 75    | 100  | 1480         | 94,9            | 0,87                    | 131                               | 484                     | 1,120  | 6,5                                   | 2,4                                  | 2,80                              | 527                 |
| K280M-4 | 90    | 125  | 1480         | 97,1            | 0,87                    | 154                               | 581                     | 1,460  | 7,1                                   | 2,5                                  | 2,90                              | 548                 |
| K315S-4 | 110   | 150  | 1490         | 96,5            | 0,88                    | 187                               | 705                     | 3,110  | 6,5                                   | 2,21                                 | 2,91                              | 850                 |
| K315M-4 | 132   | 180  | 1490         | 95,4            | 0,88                    | 227                               | 846                     | 3,290  | 5,7                                   | 1,88                                 | 2,56                              | 918                 |
| K315L-4 | 160   | 220  | 1490         | 95,4            | 0,89                    | 272                               | 1.026                   | 3,790  | 6,9                                   | 2,28                                 | 2,72                              | 1.018               |
| K315L-4 | 200   | 270  | 1490         | 96,4            | 0,89                    | 337                               | 1.282                   | 4,490  | 5,7                                   | 2,1                                  | 2,70                              | 1.122               |
| K355M-4 | 250   | 340  | 1490         | 96,0            | 0,9                     | 418                               | 1.602                   | 5,670  | 7,2                                   | 2,29                                 | 2,89                              | 1.650               |
| K355L-4 | 315   | 430  | 1490         | 97,8            | 0,9                     | 517                               | 2.019                   | 8,702  | 5,3                                   | 2,11                                 | 2,49                              | 1.804               |
| K355L-4 | 355   | 480  | 1490         | 96,0            | 0,89                    | 600                               | 2.275                   | 11,2   | 7,8                                   | 2,3                                  | 3,4                               | 2.083               |
| K400-4  | 400   | 540  | 1490         | 96,0            | 0,88                    | 682                               | 2.564                   | 14,9   | 6,2                                   | 1,33                                 | 3,58                              | 3.000               |
| K400-4  | 450   | 610  | 1490         | 96,0            | 0,90                    | 753                               | 2.884                   | 15,1   | 6,7                                   | 1,25                                 | 3,35                              | 3.050               |
| K400L-4 | 500   | 680  | 1490         | 96,2            | 0,89                    | 846                               | 3.205                   | 18,4   | 6,3                                   | 1,22                                 | 3,16                              | 3.300               |
| K400-4  | 560   | 760  | 1490         | 96,0            | 0,89                    | 946                               | 3.589                   | 19,5   | 7,4                                   | 1,74                                 | 3,92                              | 3.400               |
| K400-4  | 630   | 850  | 1485         | 96,2            | 0,9                     | 1052                              | 4.052                   | 21,1   | 5,8                                   | 1,32                                 | 2,8                               | 3.500               |
| K400-4  | 710   | 965  | 1490         | 96,0            | 0,9                     | 1181                              | 4.551                   | 21,8   | 7,0                                   | 1,47                                 | 3,55                              | 3.600               |
| K450-4  | 800   | 1090 | 1490         | 96,6            | 0,89                    | 1349                              | 5.128                   | 33,8   | 7,0                                   | 1,2                                  | 2                                 | 4.700               |
| K450-4  | 900   | 1225 | 1490         | 96,8            | 0,89                    | 1514                              | 5.768                   | 36,9   | 7,0                                   | 1,2                                  | 2                                 | 4.900               |
| K450-4  | 1000  | 1360 | 1490         | 96,8            | 0,89                    | 1682                              | 6.409                   | 41,9   | 7,0                                   | 1,2                                  | 2                                 | 5.150               |
| K500-4  | 1120  | 1525 | 1490         | 97,0            | 0,9                     | 1859                              | 7.179                   | 53,0   | 7,0                                   | 0,9                                  | 2                                 | 5.680               |
| K500-4  | 1250  | 1700 | 1490         | 97,0            | 0,9                     | 2075                              | 8.012                   | 59,0   | 7,0                                   | 0,9                                  | 2                                 | 5.820               |
| K500-4  | 1400  | 1900 | 1490         | 97,0            | 0,9                     | 2324                              | 8.973                   | 66,0   | 7,0                                   | 0,9                                  | 2                                 | 6.140               |

# K-series

Three-phase motors with squirrel cage, protection degree IP55

**6 POLES-1.000 Rpm**  
 380-420/220-240 VY/Δ 50 Hz  
 660-725/380-420 VY/Δ 50 Hz  
 Insulation class F

| TYPE    | Power |      | Speed<br>Rpm | Efficiency<br>% | Power<br>Factor<br>σμφ | Rated cur-<br>rent (400V)<br>Amp | Nominal<br>Torque<br>Nm | Moment<br>of inertia<br>GD <sup>2</sup> /4<br>Kgm <sup>2</sup> | Starting<br>current<br>Ratio<br>Ip/In | Starting<br>Torque<br>Ratio<br>Mp/Mn | Break<br>down<br>Torque<br>Mm/Mn | Net<br>Weight<br>Kg |
|---------|-------|------|--------------|-----------------|------------------------|----------------------------------|-------------------------|--|---------------------------------------|--------------------------------------|----------------------------------|---------------------|
|         | KW    | HP   |              |                 |                        |                                  |                         |  |                                       |                                      |                                  |                     |
| K80-6   | 0,37  | 0,5  | 890          | 61,4            | 0,70                   | 1,2                              | 4,0                     | 0,0016   | 3,5                                   | 2,00                                 | 2,80                             | 15                  |
| K80-6   | 0,55  | 0,75 | 890          | 64,1            | 0,72                   | 1,7                              | 5,9                     | 0,0021   | 3,0                                   | 2,11                                 | 2,29                             | 16                  |
| K90S-6  | 0,75  | 1    | 910          | 68,4            | 0,72                   | 2,2                              | 7,9                     | 0,0029   | 4,6                                   | 2,90                                 | 2,70                             | 21                  |
| K90L-6  | 1,1   | 1,5  | 910          | 71,1            | 0,73                   | 3,1                              | 11,5                    | 0,0035   | 4,6                                   | 2,60                                 | 2,60                             | 23                  |
| K100L-6 | 1,5   | 2    | 920          | 75,5            | 0,75                   | 3,8                              | 15,6                    | 0,0069   | 4,8                                   | 2,00                                 | 2,10                             | 29                  |
| K112M-6 | 2,2   | 3    | 935          | 79,5            | 0,76                   | 5,3                              | 22,5                    | 0,0129   | 5,3                                   | 1,50                                 | 2,40                             | 37                  |
| K132S-6 | 3     | 4    | 960          | 86,4            | 0,76                   | 6,6                              | 30                      | 0,0274   | 6,4                                   | 2,10                                 | 3,20                             | 52                  |
| K132M-6 | 4     | 5,5  | 960          | 86,4            | 0,76                   | 8,8                              | 40                      | 0,0343   | 7,0                                   | 1,80                                 | 3,60                             | 59                  |
| K132M-6 | 5,5   | 7,5  | 960          | 86,0            | 0,77                   | 12                               | 55                      | 0,0431   | 7,5                                   | 2,10                                 | 4,00                             | 72                  |
| K160M-6 | 7,5   | 10   | 970          | 87,4            | 0,78                   | 15,9                             | 74                      | 0,0880   | 6,1                                   | 2,27                                 | 2,76                             | 98                  |
| K160L-6 | 11    | 15   | 970          | 89,8            | 0,77                   | 23                               | 108                     | 0,1160   | 6,0                                   | 2,28                                 | 2,83                             | 121                 |
| K180L-6 | 15    | 20   | 970          | 91,0            | 0,81                   | 29                               | 148                     | 0,2070   | 6,6                                   | 2,36                                 | 2,93                             | 164                 |
| K200L-6 | 18,5  | 25   | 970          | 93,0            | 0,81                   | 36                               | 182                     | 0,3150   | 6,7                                   | 2,68                                 | 2,71                             | 208                 |
| K200L-6 | 22    | 30   | 970          | 93,7            | 0,83                   | 41                               | 217                     | 0,3600   | 6,4                                   | 2,60                                 | 2,72                             | 217                 |
| K225M-6 | 30    | 40   | 980          | 91,8            | 0,84                   | 56                               | 292                     | 0,5470   | 6,8                                   | 2,59                                 | 2,69                             | 287                 |
| K250M-6 | 37    | 50   | 980          | 94,8            | 0,86                   | 66                               | 361                     | 0,8340   | 6,0                                   | 2,15                                 | 2,40                             | 355                 |
| K280S-6 | 45    | 60   | 980          | 93,6            | 0,86                   | 81                               | 439                     | 1,3900   | 6,2                                   | 1,89                                 | 2,44                             | 456                 |
| K280M-6 | 55    | 75   | 980          | 95,4            | 0,86                   | 97                               | 536                     | 1,6500   | 6,2                                   | 1,80                                 | 2,50                             | 502                 |
| K315S-6 | 75    | 100  | 990          | 93,9            | 0,86                   | 134                              | 723                     | 4,1100   | 6,4                                   | 2,11                                 | 2,83                             | 786                 |
| K315M-6 | 90    | 125  | 990          | 94,3            | 0,86                   | 160                              | 868                     | 4,2800   | 6,9                                   | 1,94                                 | 2,84                             | 884                 |
| K315L-6 | 110   | 150  | 990          | 94,4            | 0,86                   | 196                              | 1.061                   | 5,4500   | 6,5                                   | 2,20                                 | 2,80                             | 964                 |
| K315L-6 | 132   | 180  | 990          | 94,6            | 0,87                   | 232                              | 1.273                   | 6,1200   | 6,5                                   | 1,95                                 | 2,86                             | 1 060               |
| K355M-6 | 160   | 220  | 990          | 95,1            | 0,88                   | 276                              | 1.543                   | 8,8500   | 6,3                                   | 2,09                                 | 2,98                             | 1 554               |
| K355M-6 | 200   | 270  | 990          | 95,5            | 0,88                   | 344                              | 1.929                   | 10,7620  | 7,0                                   | 1,70                                 | 3,40                             | 1 768               |
| K355L-6 | 250   | 340  | 990          | 95,4            | 0,88                   | 430                              | 2.412                   | 12,8000  | 7                                     | 1,7                                  | 3,3                              | 1 902               |
| K400-6  | 315   | 430  | 990          | 95,8            | 0,88                   | 537                              | 3.039                   | 18   | 6,5                                   | 1,42                                 | 3,17                             | 3.500               |
| K400-6  | 355   | 480  | 990          | 96,2            | 0,88                   | 606                              | 3.424                   | 19   | 6,6                                   | 1,2                                  | 3,4                              | 3.600               |
| K400-6  | 400   | 540  | 990          | 95,5            | 0,88                   | 688                              | 3.859                   | 21,7   | 7,2                                   | 1,4                                  | 1,3                              | 3.800               |
| K400-6  | 450   | 610  | 990          | 95,8            | 0,89                   | 759                              | 4.341                   | 22   | 6,5                                   | 1,1                                  | 3,2                              | 3.870               |
| K400-6  | 500   | 680  | 990          | 95,5            | 0,86                   | 880                              | 4.823                   | 23,4   | 7,1                                   | 1,7                                  | 3,7                              | 4.000               |
| K400-6  | 560   | 760  | 985          | 95,7            | 0,87                   | 976                              | 5.429                   | 24   | 7,1                                   | 1,5                                  | 3,9                              | 4.100               |
| K450L-6 | 630   | 850  | 995          | 96,7            | 0,85                   | 1110                             | 6.046                   | 45,1   | 6,5                                   | 1,4                                  | 1,8                              | 4.700               |
| K450L-6 | 710   | 965  | 995          | 96,7            | 0,85                   | 1251                             | 6.814                   | 48,6   | 6,5                                   | 1,4                                  | 1,8                              | 5.100               |
| K450L-6 | 800   | 1090 | 995          | 96,7            | 0,85                   | 1410                             | 7.678                   | 54,2   | 6,5                                   | 1,4                                  | 1,8                              | 5.500               |
| K500-6  | 900   | 1225 | 995          | 97              | 0,86                   | 1563                             | 8.638                   | 68,5   | 6,5                                   | 1                                    | 1,8                              | 5.800               |
| K500-6  | 1000  | 1360 | 995          | 97              | 0,86                   | 1737                             | 9.598                   | 72,1   | 6,5                                   | 1                                    | 1,8                              | 6.100               |
| K500-6  | 1120  | 1525 | 995          | 97              | 0,86                   | 1945                             | 10.750                  | 75,3   | 6,5                                   | 1                                    | 1,8                              | 6.250               |
| K560-6  | 1250  | 1700 | 995          | 97              | 0,86                   | 2171                             | 11.997                  | 80,5   | 6,5                                   | 0,8                                  | 1,8                              | 6.900               |
| K560-6  | 1400  | 1900 | 995          | 97              | 0,86                   | 2432                             | 13.437                  | 84,6   | 6,5                                   | 0,8                                  | 1,8                              | 7.150               |

# K-series

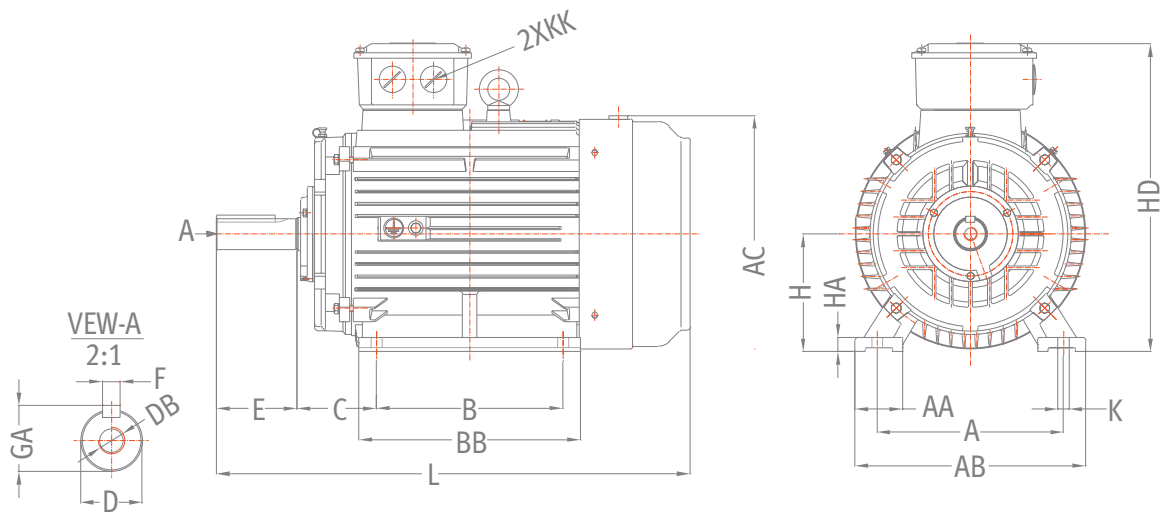
Three-phase motors with squirrel cage, protection degree IP55

**8 POLES-750 Rpm**  
 380-420/220-240 VY/Δ 50 Hz  
 660-725/380-420 VY/Δ 50 Hz  
 Insulation class F

| TYPE    | Power |      | Speed<br>Rpm | Efficiency<br>% | Power<br>factor<br>cosφ | Rated<br>current<br>(400V)<br>Amp | Nominal<br>torque<br>Nm | Moment<br>of inertia<br>GD <sup>2</sup> /4<br>Kgm <sup>2</sup> | Starting<br>current<br>ratio<br>Ip/In | Starting<br>torque<br>ratio<br>Mp/Mn | Breakdown<br>torque<br>Mm/Mn | Net<br>weight<br>Kg |
|---------|-------|------|--------------|-----------------|-------------------------|-----------------------------------|-------------------------|--|---------------------------------------|--------------------------------------|------------------------------|---------------------|
|         | KW    | HP   |              |                 |                         |                                   |                         |  |                                       |                                      |                              |                     |
| K80-8   | 0,18  | 0,25 | 630          | 49,5            | 0,61                    | 0,86                              | 2,7                     | 0,0016   | 2,9                                   | 2,50                                 | 3,20                         | 15                  |
| K80-8   | 0,25  | 0,33 | 640          | 56,3            | 0,61                    | 1,05                              | 3,7                     | 0,0021   | 2,8                                   | 2,40                                 | 3,10                         | 17                  |
| K90S-8  | 0,37  | 0,5  | 660          | 61,1            | 0,61                    | 1,43                              | 5,4                     | 0,0029   | 3,5                                   | 2,30                                 | 3,10                         | 21                  |
| K90L-8  | 0,55  | 0,75 | 660          | 61,9            | 0,61                    | 2,10                              | 8,0                     | 0,0035   | 3,7                                   | 2,20                                 | 2,60                         | 24                  |
| K100L-8 | 0,75  | 1    | 690          | 70,5            | 0,67                    | 2,30                              | 10,4                    | 0,0063   | 3,9                                   | 2,30                                 | 2,90                         | 28                  |
| K100L-8 | 1,1   | 1,5  | 690          | 73,0            | 0,69                    | 3,16                              | 15,2                    | 0,0077   | 4,0                                   | 2,80                                 | 2,80                         | 33                  |
| K112M-8 | 1,5   | 2    | 680          | 74,6            | 0,69                    | 4,21                              | 21,1                    | 0,0138   | 4,8                                   | 2,30                                 | 3,10                         | 45                  |
| K132S-8 | 2,2   | 3    | 710          | 78,0            | 0,71                    | 5,7                               | 30                      | 0,0290   | 5,2                                   | 1,90                                 | 2,90                         | 51                  |
| K132M-8 | 3     | 4    | 710          | 78,6            | 0,73                    | 7,6                               | 40                      | 0,0380   | 5,2                                   | 2,00                                 | 3,10                         | 61                  |
| K160M-8 | 4     | 5,5  | 720          | 81,6            | 0,73                    | 9,7                               | 53                      | 0,0649   | 5,3                                   | 1,80                                 | 2,90                         | 89                  |
| K160M-8 | 5,5   | 7,5  | 720          | 83,3            | 0,74                    | 12,9                              | 73                      | 0,0821   | 6,0                                   | 2,10                                 | 3,20                         | 107                 |
| K160L-8 | 7,5   | 10   | 720          | 86,0            | 0,75                    | 16,8                              | 99                      | 0,1140   | 6,0                                   | 2,10                                 | 3,30                         | 120                 |
| K180L-8 | 11    | 15   | 730          | 87,9            | 0,76                    | 23,8                              | 144                     | 0,1670   | 6,4                                   | 2,10                                 | 3,00                         | 158                 |
| K200L-8 | 15    | 20   | 730          | 88,3            | 0,76                    | 32                                | 196                     | 0,3250   | 6,3                                   | 2,20                                 | 2,90                         | 228                 |
| K225S-8 | 18,5  | 25   | 730          | 90,4            | 0,76                    | 39                                | 242                     | 0,4810   | 6,6                                   | 2,20                                 | 2,80                         | 258                 |
| K225M-8 | 22    | 30   | 740          | 91,2            | 0,78                    | 45                                | 284                     | 0,5310   | 7,1                                   | 2,20                                 | 3,00                         | 282                 |
| K250M-8 | 30    | 40   | 740          | 91,5            | 0,79                    | 60                                | 387                     | 0,8090   | 6,0                                   | 2,00                                 | 3,00                         | 367                 |
| K280S-8 | 37    | 50   | 740          | 92,0            | 0,79                    | 74                                | 478                     | 1,3810   | 5,7                                   | 2,10                                 | 2,80                         | 468                 |
| K280M-8 | 45    | 60   | 740          | 92,5            | 0,79                    | 89                                | 581                     | 1,7210   | 5,8                                   | 2,10                                 | 2,90                         | 515                 |
| K315S-8 | 55    | 75   | 740          | 93,4            | 0,81                    | 105                               | 710                     | 4,5900   | 5,0                                   | 1,60                                 | 2,90                         | 752                 |
| K315M-8 | 75    | 100  | 740          | 93,4            | 0,81                    | 143                               | 968                     | 5,3600   | 6,1                                   | 2,00                                 | 2,80                         | 870                 |
| K315L-8 | 90    | 125  | 740          | 94,2            | 0,82                    | 168                               | 1.161                   | 6,1100   | 6,3                                   | 1,80                                 | 2,90                         | 976                 |
| K315L-8 | 110   | 150  | 740          | 94,5            | 0,82                    | 205                               | 1.420                   | 6,5500   | 6,4                                   | 1,70                                 | 3,10                         | 1.096               |
| K355M-8 | 132   | 180  | 740          | 94,3            | 0,82                    | 247                               | 1.704                   | 12,8550  | 6,5                                   | 1,80                                 | 3,10                         | 1.556               |
| K355M-8 | 160   | 220  | 740          | 94,6            | 0,82                    | 298                               | 2.065                   | 14,3400  | 6,7                                   | 1,80                                 | 3,40                         | 1.704               |
| K355L-8 | 200   | 270  | 740          | 94,9            | 0,83                    | 367                               | 2.581                   | 15,8240  | 6,0                                   | 1,70                                 | 3,10                         | 1.989               |
| K400-8  | 250   | 340  | 740          | 95,1            | 0,80                    | 473                               | 3.226                   | 25,4   | 6,8                                   | 1,4                                  | 3,8                          | 3.200               |
| K400-8  | 315   | 430  | 740          | 95,5            | 0,86                    | 557                               | 4.065                   | 27,5   | 6,1                                   | 1                                    | 2,9                          | 3.250               |
| K400-8  | 355   | 480  | 740          | 95,5            | 0,82                    | 651                               | 4.581                   | 29,2   | 5,9                                   | 1,3                                  | 3                            | 3.300               |
| K400-8  | 400   | 540  | 745          | 95,2            | 0,81                    | 747                               | 5.128                   | 31,1   | 5,7                                   | 1,2                                  | 3                            | 3.350               |
| K400-8  | 450   | 610  | 740          | 95,6            | 0,8                     | 852                               | 5.807                   | 29   | 6                                     | 1,5                                  | 1,8                          | 3.760               |
| K450-8  | 500   | 680  | 745          | 95,8            | 0,8                     | 945                               | 6.409                   | 44,1   | 5,6                                   | 1,2                                  | 1,8                          | 4.750               |
| K450-8  | 560   | 760  | 745          | 95,8            | 0,8                     | 1058                              | 7.179                   | 49,5   | 5,6                                   | 1,2                                  | 1,8                          | 5220                |
| K450-8  | 630   | 850  | 745          | 96              | 0,8                     | 1188                              | 8.076                   | 54,8   | 5,6                                   | 1,2                                  | 1,8                          | 5600                |
| K500-8  | 710   | 965  | 745          | 96              | 0,81                    | 1323                              | 9.101                   | 70,1   | 5,6                                   | 1                                    | 1,8                          | 5750                |
| K500-8  | 800   | 1090 | 745          | 96,2            | 0,81                    | 1487                              | 10.255                  | 73,2   | 5,6                                   | 1                                    | 1,8                          | 5950                |
| K500-8  | 900   | 1225 | 745          | 96,2            | 0,81                    | 1673                              | 11.537                  | 76,8   | 5,6                                   | 1                                    | 1,8                          | 6150                |
| K560-8  | 1000  | 1360 | 745          | 96,5            | 0,81                    | 1854                              | 12.819                  | 81,8   | 5,6                                   | 0,8                                  | 1,8                          | 6850                |
| K560-8  | 1120  | 1525 | 745          | 96,8            | 0,81                    | 2070                              | 14.357                  | 84,1   | 5,6                                   | 0,8                                  | 1,8                          | 7050                |
| K560-8  | 1250  | 1700 | 745          | 97              | 0,81                    | 2305                              | 16.023                  | 88,4   | 5,6                                   | 0,8                                  | 1,8                          | 7300                |

# K-series

## Dimension sheet



### MOUNTING B3

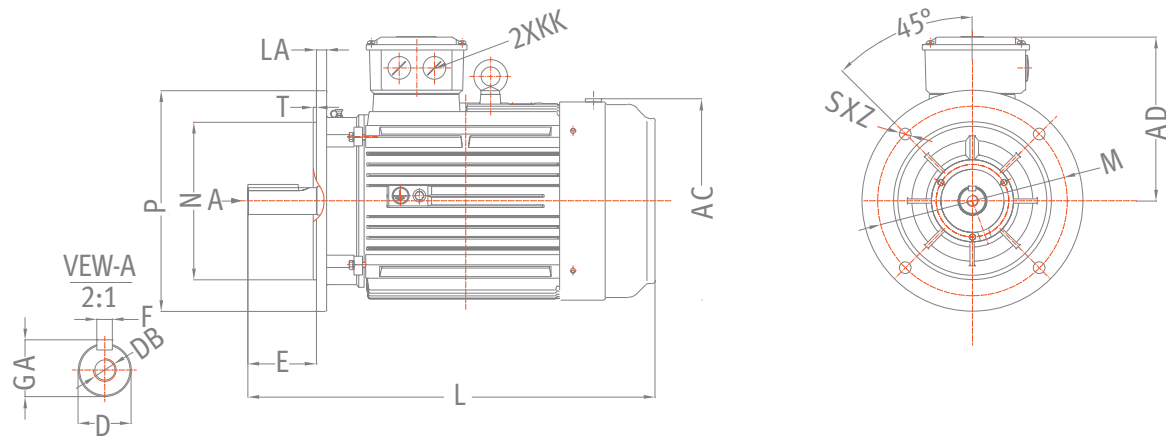
#### SIZE 80-355

| TYPE        | H   | A   | B   | C   | AA  | AB  | BB  | AC  | HD   | HA   | KK      | K    | D   | E    | F    | GA   | DB     | L    |
|-------------|-----|-----|-----|-----|-----|-----|-----|-----|------|------|---------|------|-----|------|------|------|--------|------|
| K80         | 80  | 125 | 100 | 50  | 34  | 160 | 130 | 175 | 230  | 10   | M25x1.5 | 10   | 19  | 40   | 6    | 21.5 | M6x16  | 295  |
| K90S        | 90  | 140 | 100 | 56  | 36  | 180 | 135 | 190 | 260  | 12.5 | M25x1.5 | 10   | 24  | 50   | 8    | 27   | M8x19  | 320  |
| K90L        |     |     | 125 |     |     |     | 160 |     |      |      |         |      |     |      |      |      |        | 345  |
| K100L       | 100 | 160 | 140 | 63  | 40  | 200 | 182 | 215 | 270  | 14   | M25x1.5 | 12   | 28  | 60   | 8    | 31   | M10x22 | 385  |
| K112M       | 112 | 190 | 140 | 70  | 45  | 230 | 195 | 236 | 310  | 14   | M32x1.5 | 12   | 28  | 60   | 8    | 31   | M10x22 | 415  |
| K132S       | 132 | 216 | 140 | 89  | 52  | 265 | 208 | 275 | 350  | 16   | M32x1.5 | 12   | 38  | 80   | 10   | 41   | M12x28 | 490  |
| K132M       |     |     | 178 |     |     |     | 245 |     |      |      |         |      |     |      |      |      |        | 520  |
| K160M       | 160 | 254 | 210 | 108 | 65  | 320 | 260 | 330 | 425  | 19   | M40x1.5 | 14.5 | 42  | 110  | 12   | 45   | M16x36 | 610  |
| K160L       |     |     | 254 |     |     |     | 305 |     |      |      |         |      |     |      |      |      |        | 655  |
| K180M       | 180 | 279 | 241 | 121 | 74  | 350 | 297 | 380 | 460  | 22   | M40x1.5 | 14.5 | 48  | 110  | 14   | 51.5 | M16x36 | 680  |
| K180L       |     |     | 279 |     |     |     | 335 |     |      |      |         |      |     |      |      |      |        | 720  |
| K200L       | 200 | 318 | 305 | 133 | 75  | 395 | 370 | 420 | 515  | 25   | M50x1.5 | 18.5 | 55  | 110  | 16   | 59   | M20x42 | 760  |
| K225S       | 225 | 356 | 286 | 149 | 75  | 436 | 355 | 465 | 560  | 28   | M50x1.5 | 18.5 | 60  | 140  | 18   | 64   | M20x42 | 825  |
| K225M-2     |     |     | 311 |     |     |     | 380 |     |      |      |         |      | 55  | 110  | 16   | 59   |        | 820  |
| K225M-4-6-8 |     |     | 311 |     |     |     | 60  |     |      |      |         |      | 140 | 18   | 64   | 850  |        |      |
| K250M-2     | 250 | 406 | 349 | 168 | 88  | 495 | 440 | 520 | 620  | 33   | M63x1.5 | 24   | 60  | 140  | 18   | 64   | M20x42 | 925  |
| K250M-4-6-8 |     |     | 65  |     |     |     | 69  |     |      |      |         |      |     |      |      |      |        |      |
| K280S-2     | 280 | 457 | 368 | 190 | 109 | 550 | 535 | 570 | 685  | 35   | M63x1.5 | 24   | 65  | 140  | 18   | 69   | M20x42 | 970  |
| K280S-4-6-8 |     |     | 368 |     |     |     | 535 |     |      |      |         |      | 75  |      | 20   | 79.5 |        |      |
| K280M-2     |     |     | 419 |     |     |     | 535 |     |      |      |         |      | 65  |      | 18   | 69   |        | 1010 |
| K280M-4-6-8 |     |     | 419 |     |     |     | 75  |     |      |      |         |      | 20  |      | 79.5 |      |        |      |
| K315S-2     | 315 | 508 | 406 | 216 | 120 | 635 | 515 | 650 | 820  | 45   | M63x1.5 | 28   | 65  | 140  | 18   | 69   | M20x42 | 1160 |
| K315S-4-6-8 |     |     | 80  |     |     |     | 170 |     |      |      |         |      | 22  | 85   | 1190 |      |        |      |
| K315M-2     |     |     | 65  |     |     |     | 140 |     |      |      |         |      | 18  | 69   | 1270 |      |        |      |
| K315M-4-6-8 |     |     | 80  |     |     |     | 170 |     |      |      |         |      | 22  | 85   | 1300 |      |        |      |
| K315L-2     |     |     | 65  |     |     |     | 140 |     |      |      |         |      | 18  | 69   | 1270 |      |        |      |
| K315L-4-6-8 |     |     | 80  |     |     |     | 170 |     |      |      |         |      | 22  | 85   | 1300 |      |        |      |
| K355M-2     | 355 | 610 | 560 | 254 | 125 | 735 | 775 | 735 | 1000 | 49   | M72x1.5 | 28   | 75  | 140  | 20   | 79.5 | M24x50 | 1500 |
| K355M-4-6-8 |     |     | 100 |     |     |     | 210 |     |      |      |         |      | 28  | 106  | 1570 |      |        |      |
| K355L-2     |     |     | 75  |     |     |     | 140 |     |      |      |         |      | 20  | 79.5 | 1500 |      |        |      |
| K355L-4-6-8 |     |     | 100 |     |     |     | 210 |     |      |      |         |      | 28  | 106  | 1570 |      |        |      |



# K-series

## Dimension sheet



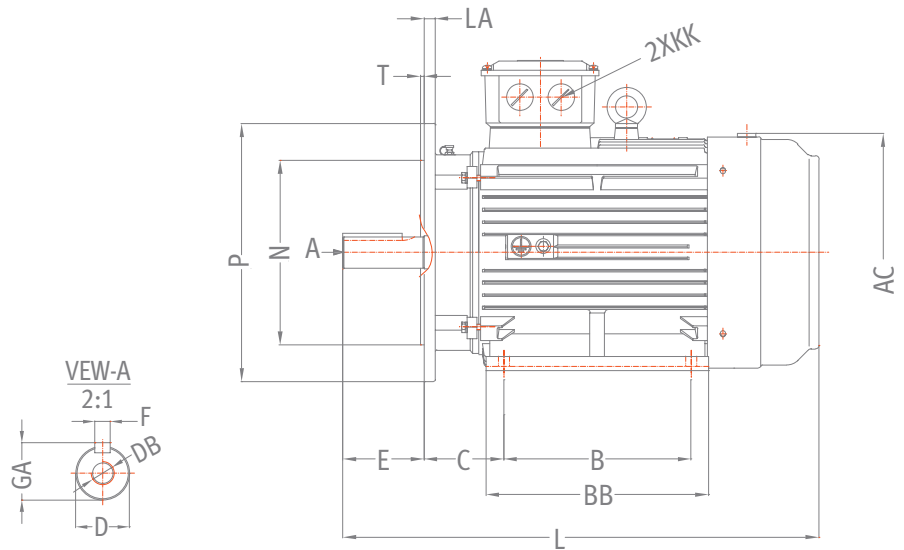
### MOUNTING B5

#### SIZE 80-355

| TYPE        | P   | N   | LA | M   | T   | S    | Z | D   | E   | F  | KK      | GA   | DB     | AD  | AC  | L    |
|-------------|-----|-----|----|-----|-----|------|---|-----|-----|----|---------|------|--------|-----|-----|------|
| K80         | 200 | 130 | 12 | 165 | 3,5 | 12   | 4 | 19  | 40  | 6  | M25x1.5 | 21,5 | M6x16  | 148 | 175 | 295  |
| K90S        | 200 | 130 | 12 | 165 | 3,5 | 12   | 4 | 24  | 50  | 8  | M25x1.5 | 27   | M8x19  | 165 | 190 | 320  |
| K90L        |     |     |    |     |     |      |   |     |     |    |         |      |        |     |     | 345  |
| K100L       | 250 | 180 | 12 | 215 | 4   | 14.5 | 4 | 28  | 60  | 8  | M25x1.5 | 31   | M10x22 | 170 | 215 | 385  |
| K112M       | 250 | 180 | 12 | 215 | 4   | 14.5 | 4 | 28  | 60  | 8  | M32x1.5 | 31   | M10x22 | 195 | 236 | 415  |
| K132S       | 300 | 230 | 13 | 265 | 4   | 14.5 | 4 | 38  | 80  | 10 | M32x1.5 | 41   | M12x28 | 215 | 275 | 490  |
| K132M       |     |     |    |     |     |      |   |     |     |    |         |      |        |     |     | 520  |
| K160M       | 350 | 250 | 15 | 300 | 5   | 18.5 | 4 | 42  | 110 | 12 | M40x1.5 | 45   | M16x36 | 265 | 330 | 610  |
| K160L       |     |     |    |     |     |      |   |     |     |    |         |      |        |     |     | 655  |
| K180M       | 350 | 250 | 15 | 300 | 5   | 18.5 | 4 | 48  | 110 | 14 | M40x1.5 | 51,5 | M16x36 | 280 | 380 | 680  |
| K180L       |     |     |    |     |     |      |   |     |     |    |         |      |        |     |     | 720  |
| K200L       | 400 | 300 | 17 | 350 | 5   | 18.5 | 4 | 55  | 110 | 16 | M50x1.5 | 59   | M20x42 | 315 | 420 | 760  |
| K225S       | 450 | 350 | 20 | 400 | 5   | 18.5 | 8 | 60  | 140 | 18 | M50x1.5 | 64   | M20x42 | 335 | 465 | 825  |
| K225M-2     |     |     |    |     |     |      |   | 55  | 110 | 16 |         | 59   |        |     |     | 820  |
| K225M-4-6-8 |     |     |    |     |     |      |   | 60  | 140 | 18 |         | 64   |        |     |     | 850  |
| K250M-2     | 550 | 450 | 20 | 500 | 5   | 18.5 | 8 | 60  | 140 | 18 | M63x1.5 | 64   | M20x42 | 375 | 520 | 925  |
| K250M-4-6-8 |     |     |    |     |     |      |   | 65  | 69  | 69 |         |      |        |     |     |      |
| K280S-2     | 550 | 450 | 20 | 500 | 5   | 18.5 | 8 | 65  | 140 | 18 | M63x1.5 | 69   | M20x42 | 405 | 570 | 970  |
| K280S-4-6-8 |     |     |    |     |     |      |   | 75  |     | 20 |         | 79,5 |        |     |     |      |
| K280M-2     |     |     |    |     |     |      |   | 65  |     | 18 |         | 69   |        |     |     |      |
| K280M-4-6-8 |     |     |    |     |     |      |   | 75  |     | 20 |         | 79,5 |        |     |     |      |
| K315S-2     | 660 | 550 | 24 | 600 | 6   | 24   | 8 | 65  | 140 | 18 | M63x1.5 | 69   | M20x42 | 500 | 650 | 1160 |
| K315S-4-6-8 |     |     |    |     |     |      |   | 80  | 170 | 22 |         | 85   |        |     |     | 1190 |
| K315M-2     |     |     |    |     |     |      |   | 65  | 140 | 18 |         | 69   |        |     |     | 1270 |
| K315M-4-6-8 |     |     |    |     |     |      |   | 80  | 170 | 22 |         | 85   |        |     |     | 1300 |
| K315L-2     |     |     |    |     |     |      |   | 65  | 140 | 18 |         | 69   |        |     |     | 1270 |
| K315L-4-6-8 |     |     |    |     |     |      |   | 80  | 170 | 22 |         | 85   |        |     |     | 1300 |
| K355M-2     | 800 | 680 | 25 | 740 | 6   | 24   | 8 | 75  | 140 | 20 | M72x1.5 | 79,5 | M24x50 | 645 | 735 | 1500 |
| K355M-4-6-8 |     |     |    |     |     |      |   | 100 | 210 | 28 |         | 106  |        |     |     | 1570 |
| K355L-2     |     |     |    |     |     |      |   | 75  | 140 | 20 |         | 79,5 | 1500   |     |     |      |
| K355L-4-6-8 |     |     |    |     |     |      |   | 100 | 210 | 28 |         | 106  | 1570   |     |     |      |

# K-series

## Dimension sheet



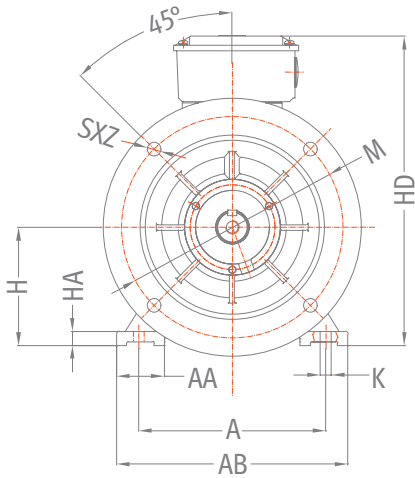
### MOUNTING B35

#### SIZE 80-355

| TYPE        | H   | A   | B   | C   | AA  | AB  | BB  | AC  | HD   | HA   | KK      | K    |
|-------------|-----|-----|-----|-----|-----|-----|-----|-----|------|------|---------|------|
| K80         | 80  | 125 | 100 | 50  | 34  | 160 | 130 | 175 | 230  | 10   | M25x1.5 | 10   |
| K90S        | 90  | 140 | 100 | 56  | 36  | 180 | 135 | 190 | 260  | 12.5 | M25x1.5 | 10   |
| K90L        |     |     | 125 |     |     |     | 160 |     |      |      |         |      |
| K100L       | 100 | 160 | 140 | 63  | 40  | 200 | 182 | 215 | 270  | 14   | M25x1.5 | 12   |
| K112M       | 112 | 190 | 140 | 70  | 45  | 230 | 195 | 236 | 310  | 14   | M32x1.5 | 12   |
| K132S       | 132 | 216 | 140 | 89  | 52  | 265 | 208 | 275 | 350  | 16   | M32x1.5 | 12   |
| K132M       |     |     | 178 |     |     |     | 245 |     |      |      |         |      |
| K160M       | 160 | 254 | 210 | 108 | 65  | 320 | 260 | 330 | 425  | 19   | M40x1.5 | 14.5 |
| K160L       |     |     | 254 |     |     |     | 305 |     |      |      |         |      |
| K180M       | 180 | 279 | 241 | 121 | 74  | 350 | 297 | 380 | 460  | 22   | M40x1.5 | 14.5 |
| K180L       |     |     | 279 |     |     |     | 335 |     |      |      |         |      |
| K200L       | 200 | 318 | 305 | 133 | 75  | 395 | 370 | 420 | 515  | 25   | M50x1.5 | 18.5 |
| K225S       | 225 | 356 | 286 | 149 | 75  | 436 | 355 | 465 | 560  | 28   | M50x1.5 | 18.5 |
| K225M-2     |     |     | 311 |     |     |     | 380 |     |      |      |         |      |
| K225M-4-6-8 |     |     |     |     |     |     |     |     |      |      |         |      |
| K250M-2     | 250 | 406 | 349 | 168 | 88  | 495 | 440 | 520 | 620  | 33   | M63x1.5 | 24   |
| K250M-4-6-8 |     |     |     |     |     |     |     |     |      |      |         |      |
| K280S-2     | 280 | 457 | 368 | 190 | 109 | 550 | 535 | 570 | 685  | 35   | M63x1.5 | 24   |
| K280S-4-6-8 |     |     |     |     |     |     |     |     |      |      |         |      |
| K280M-2     |     |     | 419 |     |     |     |     |     |      |      |         |      |
| K280M-4-6-8 |     |     |     |     |     |     |     |     |      |      |         |      |
| K315S-2     | 315 | 508 | 406 | 216 | 120 | 635 | 515 | 650 | 820  | 45   | M63x1.5 | 28   |
| K315S-4-6-8 |     |     |     |     |     |     |     |     |      |      |         |      |
| K315M-2     |     |     | 457 |     |     |     | 625 |     |      |      |         |      |
| K315M-4-6-8 |     |     |     |     |     |     |     |     |      |      |         |      |
| K315L-2     |     |     | 508 |     |     |     |     |     |      |      |         |      |
| K315L-4-6-8 |     |     |     |     |     |     |     |     |      |      |         |      |
| K355M-2     | 355 | 610 | 560 | 254 | 125 | 735 | 775 | 735 | 1000 | 49   | M72x1.5 | 28   |
| K355M-4-6-8 |     |     |     |     |     |     |     |     |      |      |         |      |
| K355L-2     |     |     | 630 |     |     |     |     |     |      |      |         |      |
| K355L-4-6-8 |     |     |     |     |     |     |     |     |      |      |         |      |

# K-series

## Dimension sheet

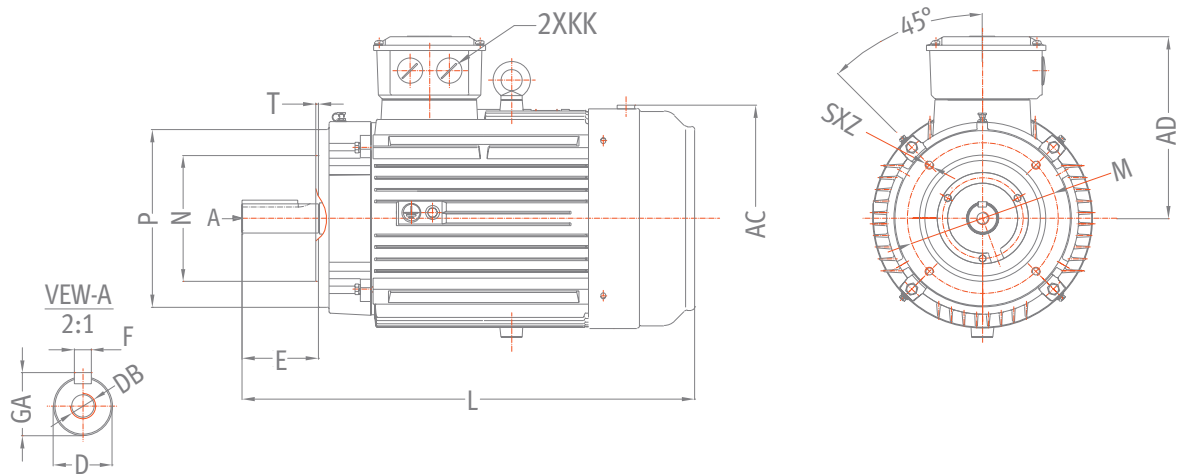


### MOUNTING B35 SIZE 80-355

| P   | N   | LA | M   | T   | S    | Z | D   | E   | F   | GA   | DB     | L    | TYPE        |             |
|-----|-----|----|-----|-----|------|---|-----|-----|-----|------|--------|------|-------------|-------------|
| 200 | 130 | 12 | 165 | 3,5 | 12   | 4 | 19  | 40  | 6   | 21.5 | M6x16  | 295  | K80         |             |
| 200 | 130 | 12 | 165 | 3,5 | 12   | 4 | 24  | 50  | 8   | 27   | M8x19  | 320  | K90S        |             |
|     |     |    |     |     |      |   |     |     |     |      |        | 345  | K90L        |             |
| 250 | 180 | 12 | 215 | 4   | 14.5 | 4 | 28  | 60  | 8   | 31   | M10x22 | 385  | K100L       |             |
| 250 | 180 | 12 | 215 | 4   | 14.5 | 4 | 28  | 60  | 8   | 31   | M10x22 | 415  | K112M       |             |
| 300 | 230 | 13 | 265 | 4   | 14.5 | 4 | 38  | 80  | 10  | 41   | M12x28 | 490  | K132S       |             |
|     |     |    |     |     |      |   |     |     |     |      |        | 520  | K132M       |             |
| 350 | 250 | 15 | 300 | 5   | 18.5 | 4 | 42  | 110 | 12  | 45   | M16x36 | 610  | K160M       |             |
|     |     |    |     |     |      |   |     |     |     |      |        | 655  | K160L       |             |
| 350 | 250 | 15 | 300 | 5   | 18.5 | 4 | 48  | 110 | 14  | 51.5 | M16x36 | 680  | K180M       |             |
|     |     |    |     |     |      |   |     |     |     |      |        | 720  | K180L       |             |
| 400 | 300 | 17 | 350 | 5   | 18.5 | 4 | 55  | 110 | 16  | 59   | M20x42 | 760  | K200L       |             |
| 450 | 350 | 20 | 400 | 5   | 18.5 | 8 | 60  | 140 | 18  | 64   | M20x42 | 825  | K225S       |             |
|     |     |    |     |     |      |   | 55  | 110 | 16  | 59   |        | 820  | K225M-2     |             |
|     |     |    |     |     |      |   | 60  | 140 | 18  | 64   |        | 850  | K225M-4-6-8 |             |
| 550 | 450 | 20 | 500 | 5   | 18.5 | 8 | 60  | 140 | 18  | 64   | M20x42 | 925  | K250M-2     |             |
|     |     |    |     |     |      |   | 65  |     |     | 69   |        |      | K250M-4-6-8 |             |
| 550 | 450 | 20 | 500 | 5   | 18.5 | 8 | 65  | 140 | 18  | 69   | M20x42 | 970  | K280S-2     |             |
|     |     |    |     |     |      |   | 75  |     | 20  | 79.5 |        |      | K280S-4-6-8 |             |
|     |     |    |     |     |      |   | 65  |     | 20  | 18   |        | 69   | 1010        | K280M-2     |
|     |     |    |     |     |      |   | 75  |     |     | 20   |        | 79.5 | K280M-4-6-8 |             |
| 660 | 550 | 24 | 600 | 6   | 24   | 8 | 65  | 140 | 18  | 69   | M20x42 | 1160 | K315S-2     |             |
|     |     |    |     |     |      |   | 80  |     | 170 | 22   |        | 85   | 1190        | K315S-4-6-8 |
|     |     |    |     |     |      |   | 65  |     | 140 | 18   |        | 69   | 1270        | K315M-2     |
|     |     |    |     |     |      |   | 80  |     | 170 | 22   |        | 85   | 1300        | K315M-4-6-8 |
|     |     |    |     |     |      |   | 65  |     | 140 | 18   |        | 69   | 1270        | K315L-2     |
|     |     |    |     |     |      |   | 80  |     | 170 | 22   |        | 85   | 1300        | K315L-4-6-8 |
| 800 | 680 | 25 | 740 | 6   | 24   | 8 | 75  | 140 | 20  | 79.5 | M24x50 | 1500 | K355M-2     |             |
|     |     |    |     |     |      |   | 100 |     | 210 | 28   |        | 106  | 1570        | K355M-4-6-8 |
|     |     |    |     |     |      |   | 75  |     | 140 | 20   |        | 79.5 | 1500        | K355L-2     |
|     |     |    |     |     |      |   | 100 |     | 210 | 28   |        | 106  | 1570        | K355L-4-6-8 |

# K-series

## Dimension sheet



### MOUNTING B14 SIZE 80-132

#### SMALL FLANGE B14 A

| TYPE  | P   | N   | M   | T   | S   | Z | D  | E  | F  | GA   | DB     | KK      | AC  | AD  | L   |
|-------|-----|-----|-----|-----|-----|---|----|----|----|------|--------|---------|-----|-----|-----|
| K80   | 120 | 80  | 100 | 3   | M6  | 4 | 19 | 40 | 6  | 21.5 | M6x16  | M25x1.5 | 175 | 148 | 295 |
| K90S  | 140 | 95  | 115 | 3   | M8  | 4 | 24 | 50 | 8  | 27   | M8x19  | M25x1.5 | 190 | 165 | 320 |
| K90L  |     |     |     |     |     |   |    |    |    |      |        |         |     |     | 345 |
| K100L | 160 | 110 | 130 | 3.5 | M8  | 4 | 28 | 60 | 8  | 31   | M10x22 | M25x1.5 | 215 | 170 | 385 |
| K112L | 160 | 110 | 130 | 3.5 | M8  | 4 | 28 | 60 | 8  | 31   | M10x22 | M32x1.5 | 236 | 195 | 415 |
| K132S | 200 | 130 | 165 | 3.5 | M10 | 4 | 38 | 80 | 10 | 41   | M12x28 | M32x1.5 | 275 | 215 | 490 |
| K132M |     |     |     |     |     |   |    |    |    |      |        |         |     |     | 520 |

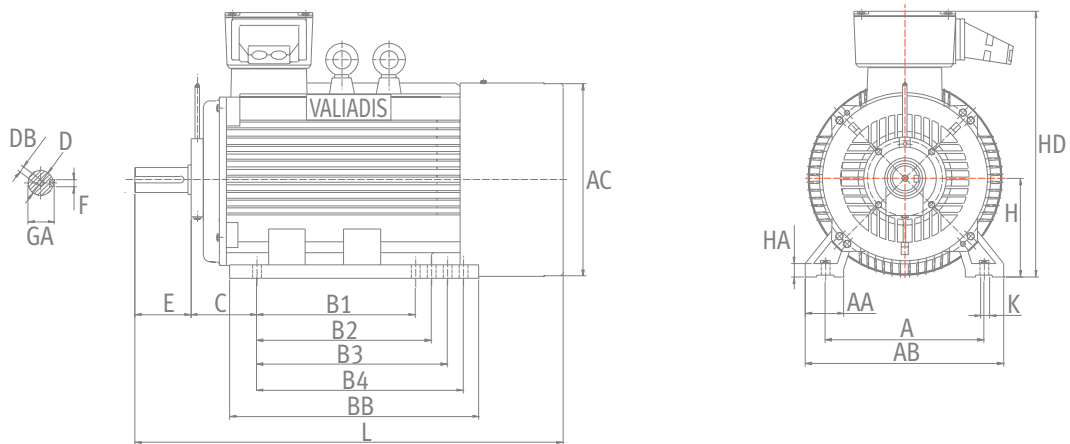
### MOUNTING B14 SIZE 80-132

#### LARGE FLANGE B14 B

| TYPE  | P   | N   | M   | T   | S   | Z | D  | E  | F  | GA   | KK      | DB     | AC  | AD  | L   |
|-------|-----|-----|-----|-----|-----|---|----|----|----|------|---------|--------|-----|-----|-----|
| K80   | 160 | 110 | 130 | 3.5 | M8  | 4 | 19 | 40 | 6  | 21.5 | M25x1.5 | M6x16  | 175 | 148 | 295 |
| K90S  | 160 | 110 | 130 | 3.5 | M8  | 4 | 24 | 50 | 8  | 27   | M25x1.5 | M8x19  | 190 | 165 | 320 |
| K90L  |     |     |     |     |     |   |    |    |    |      |         |        |     |     | 345 |
| K100L | 200 | 130 | 165 | 3.5 | M10 | 4 | 28 | 60 | 8  | 31   | M25x1.5 | M10x22 | 215 | 170 | 385 |
| K112L | 200 | 130 | 165 | 3.5 | M10 | 4 | 28 | 60 | 8  | 31   | M32x1.5 | M10x22 | 236 | 195 | 415 |
| K132S | 250 | 180 | 215 | 4   | M12 | 4 | 38 | 80 | 10 | 41   | M32x1.5 | M12x28 | 275 | 215 | 490 |
| K132M |     |     |     |     |     |   |    |    |    |      |         |        |     |     | 520 |

# K-series

## Dimension sheet



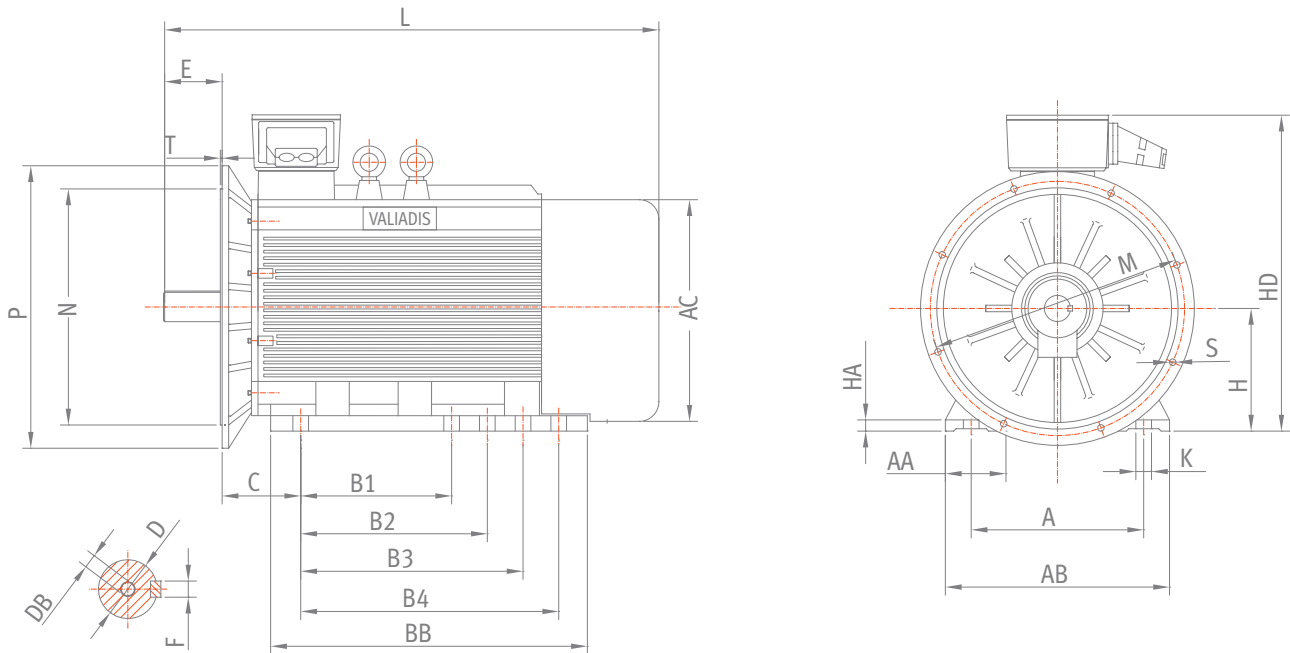
### MOUNTING B3 SIZE 400-560

| TYPE       | H   | A    | B1   | B2   | B3   | B4   | C   | AA  | AB   |
|------------|-----|------|------|------|------|------|-----|-----|------|
| K400 - 2   | 400 | 686  | 630  | 710  | □    | □    | 280 | 120 | 806  |
| K400 4-6-8 |     |      |      |      |      |      |     |     |      |
| K450 - 2   | 450 | 800  | 900  | 1000 | 1120 | 1250 | 280 | 225 | 980  |
| K450 4-6-8 |     |      |      |      |      |      |     |     |      |
| K500 4-6-8 | 500 | 1000 | 1400 | □    | □    | □    | 315 | 180 | 1080 |
| K560 4-6-8 | 560 | 1000 | 1400 | □    | □    | □    | 355 | 210 | 1170 |

| TYPE       | BB   | AC   | HD   | HA | K   | D     | E   | F  | DB  | L    |
|------------|------|------|------|----|-----|-------|-----|----|-----|------|
| K400 - 2   | 1090 | 810  | 1090 | 45 | ∅35 | 80    | 170 | 22 | M20 | 1841 |
| K400 4-6-8 |      |      |      |    |     | 110m6 | 210 | 28 | M24 | 1881 |
| K450 - 2   | 1495 | 1035 | 1310 | 45 | ∅35 | 95    | 170 | 25 | M24 | 2360 |
| K450 4-6-8 |      |      |      |    |     | 120   | 210 | 32 |     | 2400 |
| K500 4-6-8 | 1600 | 1095 | 1365 | 65 | ∅42 | 140   | 250 | 36 | M24 | 2520 |
| K560 4-6-8 | 1680 | 1195 | 1480 | 76 | ∅42 | 160   | 300 | 40 | M24 | 2650 |

# K-series

## Dimension sheet



### MOUNTING B35

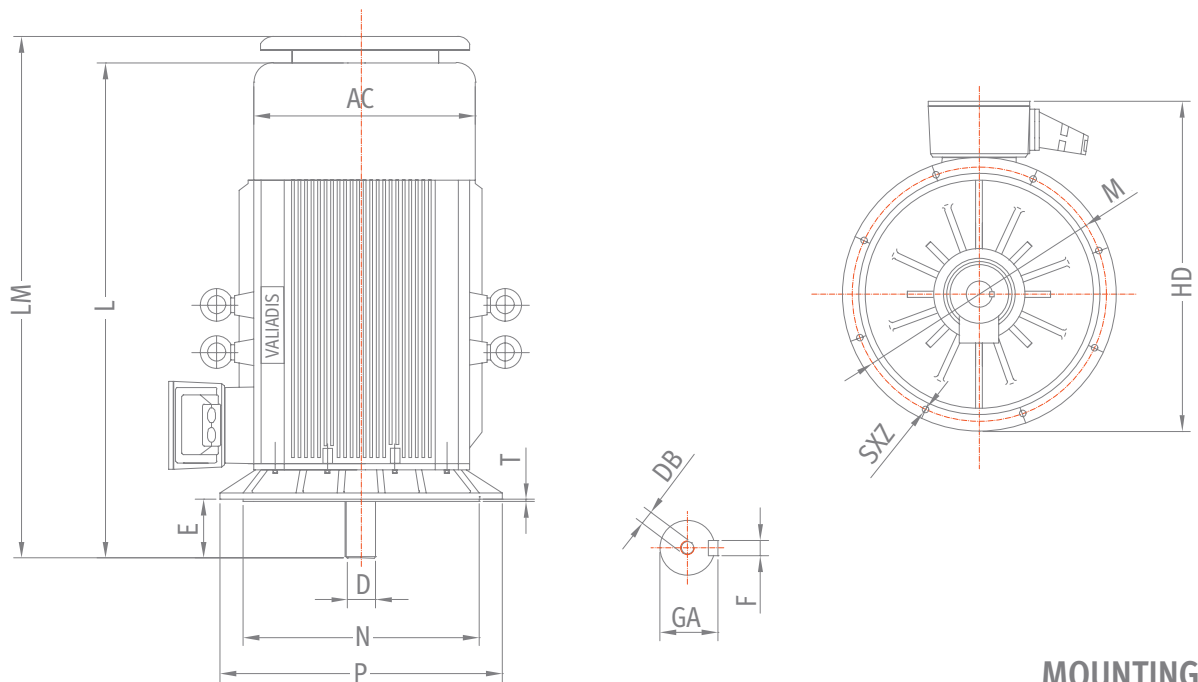
SIZE 400-560

| TYPE       | P    | N    | M    | T | S    | H   | A    | B1   | B2   | B3   | B4   | C   |
|------------|------|------|------|---|------|-----|------|------|------|------|------|-----|
| K400 - 2   | 1000 | 880  | 940  | 6 | 8Ø28 | 400 | 686  | 630  | 710  | □    | □    | 280 |
| K400 4-6-8 |      |      |      |   |      |     |      |      |      |      |      |     |
| K450 - 2   | 1000 | 880  | 940  | 6 | 8Ø28 | 450 | 800  | 900  | 1000 | 1120 | 1250 | 280 |
| K450 4-6-8 |      |      |      |   |      |     |      |      |      |      |      |     |
| K500 4-6-8 | 1150 | 1000 | 1080 | 6 | 8Ø28 | 500 | 900  | 1120 | □    | □    | □    | 315 |
| K560 4-6-8 | 1250 | 1120 | 1180 | 7 | 8Ø28 | 560 | 1000 | 1400 | □    | □    | □    | 355 |

| TYPE       | AA  | AB   | BB   | AC   | HD   | HA | K   | D     | E   | F  | DB  | L    |
|------------|-----|------|------|------|------|----|-----|-------|-----|----|-----|------|
| K400 - 2   | 120 | 806  | 1090 | 810  | 1075 | 45 | Ø35 | 80    | 170 | 22 | M20 | 1841 |
| K400 4-6-8 |     |      |      |      |      |    |     | 110m6 | 210 | 28 | M24 | 1881 |
| K450 - 2   | 225 | 980  | 1495 | 1035 | 1310 | 45 | Ø35 | 95    | 170 | 25 | M24 | 2360 |
| K450 4-6-8 |     |      |      |      |      |    |     | 120   | 210 | 32 |     | 2400 |
| K500 4-6-8 | 180 | 1080 | 1600 | 1095 | 1365 | 65 | Ø42 | 140   | 250 | 36 | M24 | 2520 |
| K560 4-6-8 | 210 | 1170 | 1680 | 1195 | 1480 | 76 | Ø42 | 160   | 300 | 40 | M24 | 2650 |

# K-series

## Dimension sheet



### MOUNTING V1 SIZE 400-560

| TYPE       | P    | N    | M    | T | S     | D     | E   | F  | GA  | HD   | AC   | L    | LM   |
|------------|------|------|------|---|-------|-------|-----|----|-----|------|------|------|------|
| K400-2     | 1000 | 880  | 940  | 6 | 8xØ28 | 80    | 170 | 22 | 85  | 1275 | 865  | 1841 | 2161 |
| K400-4-6-8 |      |      |      |   |       | 110m6 | 210 | 28 | 116 |      |      | 1881 | 2201 |
| K450-2     | 1000 | 880  | 940  | 6 | 8xØ28 | 95    | 170 | 25 | 100 | 1536 | 1035 | 2360 | 2710 |
| K450-4-6-8 |      |      |      |   |       | 120   | 210 | 32 | 127 |      |      | 2400 | 2750 |
| K500-4-6-8 | 1150 | 1000 | 1080 | 6 | 8xØ28 | 140   | 250 | 36 | 148 | 1576 | 1095 | 2520 | 2850 |
| K560-4-6-8 | 1250 | 1120 | 1180 | 7 | 8xØ28 | 160   | 300 | 40 | 168 | 1681 | 1195 | 2650 | 3000 |

### BEARINGS

| Frame | Drive-End |                 | Non-Drive-End |                 |
|-------|-----------|-----------------|---------------|-----------------|
|       | 2p        | 4,6,8p          | 2p            | 4,6,8p          |
| 80    | 6204ZZ C3 | 6204ZZ C3       | 6204ZZ C3     | 6204ZZ C3       |
| 90    | 6205ZZ C3 | 6205ZZ C3       | 6205ZZ C3     | 6205ZZ C3       |
| 100   | 6206ZZ C3 | 6206ZZ C3       | 6206ZZ C3     | 6206ZZ C3       |
| 112   | 6306ZZ C3 | 6306ZZ C3       | 6306ZZ C3     | 6306ZZ C3       |
| 132   | 6308ZZ C3 | 6308ZZ C3       | 6308ZZ C3     | 6308ZZ C3       |
| 160   | 6309C3    | 6309C3          | 6309C3        | 6309C3          |
| 180   | 6311C3    | 6311C3          | 6311C3        | 6311C3          |
| 200   | 6312C3    | 6312C3          | 6312C3        | 6312C3          |
| 225   | 6313C3    | 6313C3          | 6313C3        | 6313C3          |
| 250   | 6314C3    | 6314C3          | 6314C3        | 6314C3          |
| 280   | 6314C3    | 6317C3          | 6314C3        | 6317C3          |
| 315   | 6317C3    | 6319C3 or NU319 | 6317C3        | 6319C3 or NU319 |
| 355   | 6319C3    | 6322C3 or NU322 | 6319C3        | 6322C3 or NU322 |
| 400   | 6317C3    | 6326C3 or NU326 | 6317C3        | 6326C3 or NU326 |
| 450   | 6319C3    | 6328C3 or NU328 | 6319C3        | 6328C3 or NU328 |
| 500   |           | 6330C3 or NU330 |               | 6330C3 or NU330 |
| 560   |           | 6330C3 or NU330 |               | 6330C3 or NU330 |

# K-series

Three-phase motors with squirrel cage, protection degree IP55

4 / 2 POLES-1.500 / 3.000 Rpm  
 CONSTANT TORQUE  
 DAHLANDER WINDING [Δ / YY]  
 380-420 V 50 Hz  
 Insulation class F

| TYPE       | Power    | Speed     | Efficiency | Power factor | Rated current (400V) | Starting current ratio | Starting torque ratio | Net weight |
|------------|----------|-----------|------------|--------------|----------------------|------------------------|-----------------------|------------|
|            | KW       | Rpm       | %          | συνφ         | Amp                  | Ip/In                  | Mp/Mn                 | Kg         |
| K80-4/2    | 0,45/0,6 | 1380/2710 | 57,5/63,0  | 0,74/0,77    | 1,69/1,79            | 3,8/4,0                | 1,6/1,7               | 17         |
| K80-4/2    | 0,6/0,8  | 1390/2750 | 59,7/63,8  | 0,78/0,91    | 2,12/2,09            | 3,8/4,5                | 1,6/1,8               | 18         |
| K90S-4/2   | 1/1,3    | 1345/2730 | 63,3/64,9  | 0,78/0,92    | 3,31/3,40            | 3,5/4,5                | 1,8/1,8               | 22         |
| K90L-4/2   | 1,4/1,9  | 1390/2790 | 75,1/70,6  | 0,82/0,91    | 3,25/4,00            | 4,8/5,4                | 2,1/2,3               | 28         |
| K100L-4/2  | 2/2,4    | 1430/2850 | 74,5/73,6  | 0,80/0,90    | 4,81/5,22            | 5,4/6,3                | 1,9/2,0               | 34         |
| K100LX-4/2 | 2,6/3,1  | 1410/2830 | 74,5/74,3  | 0,85/0,93    | 5,89/6,43            | 5,6/6,8                | 1,9/2,1               | 38         |
| K112M-4/2  | 3,6/4,3  | 1440/2870 | 82,5/79,7  | 0,82/0,90    | 7,86/9,6             | 6,6/7,2                | 2,2/2,0               | 47         |
| K132S-4/2  | 4,9/6    | 1425/2820 | 80,2/77,9  | 0,86/0,92    | 10,2/11,9            | 5,6/5,2                | 1,5/1,8               | 61         |
| K132M-4/2  | 6,5/9    | 1430/2845 | 83,4/82,0  | 0,88/0,93    | 13,4/15,2            | 6,7/6,4                | 1,7/1,7               | 73         |
| K160M-4/2  | 9/11     | 1450/2920 | 85,5/86,5  | 0,76/0,90    | 21,1/20,4            | 6,1/7,4                | 1,8/2,0               | 113        |
| K160L-4/2  | 13/16    | 1440/2905 | 87,4/84,3  | 0,88/0,93    | 23,4/27,5            | 6,6/7,9                | 1,9/2,4               | 133        |
| K180M-4/2  | 15/19    | 1460/2930 | 87,0/87,0  | 0,85/0,87    | 29,3/36,2            | 5,5/6,4                | 2,0/1,9               | 167        |
| K180L-4/2  | 18,5/22  | 1460/2930 | 89,3/86,9  | 0,90/0,93    | 33,1/39,3            | 6,0/7,5                | 1,6/1,8               | 181        |
| K200L-4/2  | 25/30    | 1465/2930 | 89,8/88,0  | 0,86/0,88    | 46,7/55,9            | 6,0/6,8                | 1,8/2,0               | 232        |
| K225S-4/2  | 30/35    | 1465/2945 | 90,2/89,0  | 0,86/0,89    | 55,8/63,8            | 6,0/6,8                | 1,8/2,0               | 287        |
| K225M-4/2  | 36/43    | 1465/2950 | 90,7/89,4  | 0,86/0,90    | 66,6/77,1            | 6,2/7,0                | 1,9/1,9               | 322        |
| K250M-4/2  | 45/54    | 1470/2960 | 91,5/89,8  | 0,86/0,90    | 86,2/96,4            | 6,5/7,0                | 1,9/2,1               | 381        |
| K280S-4/2  | 60/72    | 1470/2950 | 92,6/91,2  | 0,87/0,90    | 107/127              | 7,0/7,1                | 2,0/2,0               | 510        |
| K280M-4/2  | 75/85    | 1470/2955 | 93,0/91,0  | 0,86/0,89    | 135/151              | 6,8/7,0                | 1,9/1,9               | 600        |
| K315S-4/2  | 82/95    | 1475/2970 | 93,5/93,0  | 0,84/0,88    | 156/168              | 5,8/7,1                | 1,8/2,0               | 970        |
| K315M-4/2  | 95/115   | 1480/2970 | 94,0/93,4  | 0,83/0,88    | 176/202              | 5,9/7,3                | 1,9/1,9               | 1.080      |
| K315L-4/2  | 110/132  | 1480/2975 | 94,8/94,0  | 0,83/0,89    | 202/228              | 5,5/7,2                | 1,8/1,9               | 1.170      |
| K315LX-4/2 | 135/165  | 1480/2975 | 94,7/93,5  | 0,82/0,88    | 251/289              | 5,7/7,2                | 1,9/1,8               | 1.210      |



# K-series

Three-phase motors with squirrel cage, protection degree IP55

4 / 2 POLES-1.500 / 3.000 Rpm  
 VARIABLE TORQUE  
 DAHLANDER WINDING [Y / YY]  
 380-420 V 50 Hz  
 Insulation class F

| TYPE       | Power    | Speed     | Efficiency | Power factor | Rated current (400V) | Starting current ratio | Starting torque ratio | Net weight |
|------------|----------|-----------|------------|--------------|----------------------|------------------------|-----------------------|------------|
|            | KW       | Rpm       | %          | σμφ          | Amp                  | Ip/In                  | Mp/Mn                 | Kg         |
| K80-4/2    | 0,18/0,7 | 1410/2875 | 52,0/64,0  | 0,65/0,77    | 0,77/2,05            | 3,5/5,5                | 1,6/2,2               | 16         |
| K80-4/2    | 0,25/0,9 | 1440/2880 | 53,3/63,1  | 0,62/0,74    | 1,07/2,79            | 3,2/5,4                | 3,0/3,1               | 17         |
| K90S-4/2   | 0,37/1,5 | 1420/2760 | 74,4/70,0  | 0,79/0,90    | 0,90/3,38            | 4,5/4,8                | 1,8/2,0               | 22         |
| K90L-4/2   | 0,5/2    | 1445/2855 | 78,0/72,1  | 0,74/0,86    | 1,24/4,63            | 5,8/6,2                | 2,4/2,4               | 28         |
| K100L-4/2  | 0,7/2,5  | 1425/2870 | 78,3/79,7  | 0,74/0,86    | 1,74/5,87            | 4,6/6,5                | 2,0/2,3               | 33         |
| K100LX-4/2 | 0,8/3    | 1430/2875 | 73,8/75,9  | 0,71/0,81    | 2,48/8,45            | 4,9/5,6                | 2,2/1,9               | 36         |
| K112M-4/2  | 1,1/4,1  | 1455/2870 | 85,0/79,7  | 0,82/0,90    | 2,48/9,57            | 6,6/7,2                | 1,6/2,0               | 47         |
| K132S-4/2  | 1,5/5,5  | 1445/2900 | 81,8/83,7  | 0,78/0,90    | 3,38/10,5            | 5,3/5,9                | 1,9/2,3               | 62         |
| K132M-4/2  | 2,2/9    | 1440/2880 | 83,4/85,7  | 0,78/0,91    | 4,90/15,1            | 5,2/7,4                | 1,9/2,2               | 85         |
| K160M-4/2  | 3/12     | 1450/2920 | 85,5/86,5  | 0,76/0,90    | 7,33/22,2            | 6,1/7,4                | 1,8/2,0               | 117        |
| K160L-4/2  | 4/16     | 1470/2920 | 87,1/89,3  | 0,73/0,89    | 9,71/30,7            | 6,1/8,1                | 2,5/2,5               | 134        |
| K180M-4/2  | 5,5/20   | 1460/2930 | 87,0/87,0  | 0,85/0,87    | 10,7/38,1            | 5,5/6,4                | 2,0/1,9               | 167        |
| K180L-4/2  | 6/24     | 1465/2925 | 88,8/87,1  | 0,90/0,93    | 11,6/42,5            | 5,3/6,7                | 1,9/1,8               | 185        |
| K200L-4/2  | 8/30     | 1465/2930 | 89,8/88,0  | 0,86/0,88    | 14,6/55,9            | 6,0/6,8                | 1,8/2,0               | 232        |
| K225S-4/2  | 10/37    | 1465/2950 | 89,9/89,4  | 0,86/0,89    | 17,7/67,1            | 6,5/7,2                | 1,9/2,0               | 287        |
| K225M-4/2  | 12/45    | 1470/2950 | 91,2/89,5  | 0,85/0,89    | 22,3/81,5            | 7,0/7,8                | 2,0/2,1               | 322        |
| K250M-4/2  | 15/55    | 1470/2960 | 91,5/89,8  | 0,86/0,90    | 27,5/98,2            | 6,5/7,0                | 1,9/2,1               | 381        |
| K280S-4/2  | 20/75    | 1475/2970 | 91,8/90,0  | 0,86/0,89    | 36,6/135             | 7,0/7,5                | 1,9/2,2               | 510        |
| K280M-4/2  | 24/90    | 1475/2970 | 92,2/90,5  | 0,85/0,90    | 44,2/159             | 7,0/7,6                | 2,0/2,2               | 600        |
| K315S-4/2  | 27/110   | 1480/2975 | 94,0/93,0  | 0,83/0,90    | 53,7/190             | 5,8/7,0                | 1,8/2,0               | 970        |
| K315M-4/2  | 33/132   | 1485/2970 | 94,3/93,6  | 0,78/0,90    | 68,7/226             | 5,1/6,8                | 1,8/1,9               | 1.080      |
| K315L-4/2  | 40/145   | 1480/2975 | 94,8/94,0  | 0,83/0,89    | 73,4/250             | 5,5/7,2                | 1,8/1,9               | 1.170      |
| K315LX-4/2 | 50/180   | 1480/2975 | 95,0/94,5  | 0,84/0,90    | 90,4/305             | 6,5/7,3                | 1,8/1,9               | 1.210      |

# K-series

Three-phase motors with squirrel cage, protection degree IP55

8 / 4 POLES-750 / 1.500 Rpm  
 CONSTANT TORQUE  
 DAHLANDER WINDING [Δ / YY]  
 380-420 V 50 Hz  
 Insulation class F

| TYPE      | Power     | Speed    | Efficiency | Power factor | Rated current (400V) | Starting current ratio | Starting torque ratio | Net weight |
|-----------|-----------|----------|------------|--------------|----------------------|------------------------|-----------------------|------------|
|           | KW        | Rpm      | %          | συφ          | Amp                  | Ip/In                  | Mp/Mn                 | Kg         |
| K80-8/4   | 0,18/0,3  | 685/1405 | 42,0/67,7  | 0,60/0,82    | 1,02/0,78            | 2,6/4,8                | 2,4/2,3               | 17         |
| K80-8/4   | 0,25/0,4  | 690/1390 | 51,1/71,4  | 0,62/0,85    | 1,11/0,94            | 2,6/4,2                | 1,6/1,7               | 19         |
| K90S-8/4  | 0,35/0,55 | 690/1425 | 46,8/73,1  | 0,62/0,83    | 1,71/1,30            | 2,9/5,2                | 2,1/1,9               | 23         |
| K90L-8/4  | 0,44/0,75 | 700/1405 | 57,1/73,6  | 0,58/0,87    | 1,90/1,69            | 3,2/4,9                | 2,2/1,9               | 25         |
| K100L-8/4 | 0,7/1,1   | 705/1425 | 53,9/71,7  | 0,60/0,85    | 3,11/2,61            | 3,5/5,7                | 2,3/2,2               | 33         |
| K100L-8/4 | 1/1,5     | 705/1415 | 84,9/56,9  | 0,63/0,43    | 3,37/3,26            | 3,9/5,7                | 1,9/1,8               | 37         |
| K112M-8/4 | 1,4/2,2   | 700/1405 | 62,5/77,3  | 0,66/0,91    | 4,90/4,5             | 3,8/5,6                | 1,5/1,2               | 39         |
| K132S-8/4 | 2,2/3,3   | 725/1455 | 73,4/82,9  | 0,65/0,89    | 6,65/6,4             | 5,3/7,3                | 1,4/1,6               | 71         |
| K132M-8/4 | 2,6/4,2   | 725/1455 | 76,1/84,2  | 0,67/0,91    | 7,41/7,9             | 5,9/7,8                | 1,4/1,4               | 75         |
| K160M-8/4 | 4,5/6,5   | 720/1440 | 80,0/85,1  | 0,73/0,91    | 12,3/14,5            | 5,3/6,2                | 1,4/1,5               | 108        |
| K160L-8/4 | 6,5/9     | 715/1430 | 82,5/85,3  | 0,73/0,92    | 16,7/20,2            | 5,2/6,3                | 1,4/1,5               | 131        |
| K180L-8/4 | 10/16     | 735/1475 | 86,1/89,2  | 0,66/0,90    | 25,5/28,8            | 6,4/8,5                | 2,4/1,9               | 171        |
| K200L-8/4 | 14/22     | 720/1460 | 87,0/88,5  | 0,72/0,89    | 34,6/38,5            | 5,5/7,2                | 1,7/1,8               | 216        |
| K225M-8/4 | 22/30     | 735/1475 | 90,8/90,3  | 0,79/0,92    | 44,5/52,2            | 5,2/7,2                | 1,8/2,1               | 292        |
| K250M-8/4 | 28/38     | 730/1475 | 91,1/91,3  | 0,84/0,94    | 52,9/63,8            | 5,8/7,8                | 1,8/2,0               | 408        |
| K280S-8/4 | 35/50     | 735/1475 | 90,9/90,2  | 0,81/0,92    | 68,5/86,7            | 5,8/7,5                | 1,8/2,0               | 465        |
| K280M-8/4 | 45/60     | 735/1475 | 90,7/90,3  | 0,84/0,95    | 85,3/101             | 5,7/8,0                | 1,8/2,1               | 540        |
| K315S-8/4 | 55/80     | 740/1485 | 92,0/91,5  | 0,81/0,90    | 107/140              | 6,5/7,8                | 1,9/2,1               | 940        |
| K315M-8/4 | 70/100    | 740/1485 | 91,5/91,7  | 0,80/0,91    | 148/173              | 6,8/7,5                | 2,0/2,3               | 1.110      |
| K315L-8/4 | 80/115    | 740/1485 | 92,5/92,0  | 0,80/0,90    | 156/200              | 6,8/7,4                | 2,0/2,3               | 1.175      |
| K315L-8/4 | 100/140   | 740/1485 | 93,0/92,4  | 0,80/0,90    | 194/243              | 6,9/7,2                | 2,1/2,2               | 1.200      |

# K-series

Three-phase motors with squirrel cage, protection degree IP55

8 / 4 POLES-750 / 1.500 Rpm  
 VARIABLE TORQUE  
 DAHLANDER WINDING [Y / YY]  
 380-420 V 50 Hz  
 Insulation class F

| TYPE      | Power    | Speed    | Efficiency | Power factor | Rated current (400V) | Starting current ratio | Starting torque ratio | Net weight |
|-----------|----------|----------|------------|--------------|----------------------|------------------------|-----------------------|------------|
|           | KW       | Rpm      | %          | συνφ         | Amp                  | Ip/In                  | Mp/Mn                 | Kg         |
| K80-8/4   | 0,12/0,6 | 695/1410 | 41,5/65,2  | 0,53/0,76    | 0,75/1,72            | 2,3/4,5                | 2,8/2,4               | 17         |
| K90S-8/4  | 0,3/1,3  | 705/1395 | 60,5/67,0  | 0,58/0,82    | 1,21/3,63            | 3,0/4,8                | 2,0/1,9               | 23         |
| K100L-8/4 | 0,5/2    | 690/1420 | 59,6/73,2  | 0,65/0,80    | 2,18/5,34            | 2,8/5,4                | 1,3/2,3               | 34         |
| K112M-8/4 | 1/4      | 695/1435 | 65,0/79,5  | 0,60/0,79    | 3,70/9,2             | 3,5/7,0                | 1,7/2,2               | 47         |
| K132S-8/4 | 1,2/5    | 740/1445 | 82,2/83,7  | 0,68/0,84    | 3,09/10,2            | 4,6/7,1                | 1,7/2,0               | 65         |
| K132M-8/4 | 1,8/6,5  | 725/1460 | 76,0/84,3  | 0,60/0,80    | 5,62/13,9            | 4,2/8,5                | 1,7/2,3               | 73         |
| K160M-8/4 | 2,5/10   | 730/1450 | 83,0/83,2  | 0,66/0,86    | 6,60/20,2            | 6,1/8,3                | 2,2/2,6               | 106        |
| K160L-8/4 | 3,5/12,5 | 730/1455 | 84,3/86,5  | 0,72/0,89    | 8,30/23,4            | 6,1/9,5                | 2,0/3,3               | 128        |
| K180M-8/4 | 4/16     | 730/1470 | 85,5/89,5  | 0,69/0,86    | 11,0/29,9            | 4,0/8,1                | 1,4/2,1               | 170        |
| K180L-8/4 | 5/20     | 725/1465 | 84,8/88,7  | 0,66/0,86    | 12,9/37,7            | 3,8/7,6                | 1,4/2,1               | 185        |
| K200L-8/4 | 7/26     | 730/1475 | 87,4/90,4  | 0,68/0,87    | 17,4/47,5            | 4,1/8,6                | 1,6/2,7               | 239        |
| K225S-8/4 | 9/35     | 735/1480 | 86,8/90,7  | 0,65/0,88    | 24,2/62,9            | 4,7/7,8                | 1,6/1,9               | 312        |
| K225M-8/4 | 11/45    | 740/1480 | 88,3/91,7  | 0,67/0,89    | 29,3/79,6            | 4,4/7,5                | 1,5/2,0               | 330        |
| K250M-8/4 | 14/50    | 735/1480 | 89,1/92,3  | 0,68/0,89    | 33,5/88,3            | 4,9/7,7                | 1,7/2,2               | 385        |
| K280S-8/4 | 14/66    | 740/1480 | 87,0/90,5  | 0,67/0,86    | 44,6/117             | 5,5/7,7                | 2,0/2,3               | 465        |
| K280M-8/4 | 20/78    | 740/1480 | 90,0/90,8  | 0,68/0,87    | 49,5/146             | 5,8/7,7                | 1,9/2,4               | 540        |
| K315S-8/4 | 22/95    | 740/1485 | 90,9/91,5  | 0,70/0,88    | 54,4/170             | 6,5/7,8                | 1,9/2,4               | 921        |
| K315M-8/4 | 26/110   | 740/1485 | 91,0/91,7  | 0,70/0,88    | 63,4/197             | 6,8/7,5                | 2,0/2,3               | 1.002      |
| K315L-8/4 | 30/130   | 740/1485 | 91,5/92,0  | 0,71/0,89    | 77,8/238             | 6,8/7,4                | 2,0/2,3               | 1.070      |
| K315L-8/4 | 38/160   | 740/1485 | 91,4/92,4  | 0,70/0,88    | 94,8/284             | 6,9/7,2                | 2,1/2,4               | 1.181      |

# K-series

Three-phase motors with squirrel cage, protection degree IP55

**6 / 4 POLES-1.000 / 1.500 Rpm**  
**CONSTANT TORQUE**  
**TWO SEPARATE WINDINGS**  
 380-420 V 50 Hz  
 Insulation class F

| TYPE       | Power     | Speed    | Efficiency | Power factor | Rated current (400V) | Starting current ratio | Starting torque ratio | Net weight |
|------------|-----------|----------|------------|--------------|----------------------|------------------------|-----------------------|------------|
|            | KW        | Rpm      | %          | συνφ         | Amp                  | Ip/In                  | Mp/Mn                 | Kg         |
| K80-6/4    | 0,2/0,28  | 920/1420 | 45,0/51,0  | 0,64/0,63    | 1,00/1,26            | 3,3/4,0                | 1,8/1,6               | 17         |
| K80-6/4    | 0,25/0,37 | 930/1420 | 53,0/62,0  | 0,66/0,63    | 1,03/1,48            | 3,0/4,5                | 1,8/1,8               | 19         |
| K90S-6/4   | 0,35/0,6  | 935/1430 | 64,0/70,0  | 0,72/0,76    | 1,10/1,63            | 3,5/5,0                | 1,8/1,7               | 23         |
| K90L-6/4   | 0,5/0,9   | 940/1430 | 63,0/70,0  | 0,75/0,77    | 1,53/2,41            | 3,5/5,2                | 1,9/2,0               | 25         |
| K100L-6/4  | 0,8/1,2   | 950/1435 | 73,5/75,0  | 0,76/0,80    | 2,07/2,89            | 3,9/5,5                | 2,0/1,9               | 34         |
| K100LX-6/4 | 1/1,5     | 950/1435 | 74,0/75,0  | 0,74/0,81    | 2,64/3,80            | 4,2/5,5                | 1,9/2,0               | 38         |
| K112M-6/4  | 1,5/2,2   | 950/1435 | 72,5/74,5  | 0,82/0,84    | 3,88/5,5             | 5,0/6,0                | 1,8/1,7               | 44         |
| K132S-6/4  | 2/3,1     | 955/1440 | 73,5/74,5  | 0,84/0,85    | 4,68/7,1             | 5,5/6,0                | 1,7/1,9               | 61         |
| K132M-6/4  | 3/4,3     | 955/1445 | 74,0/77,0  | 0,85/0,87    | 6,43/9,3             | 6,0/6,5                | 1,8/2,0               | 73         |
| K160M-6/4  | 4,5/6,5   | 965/1450 | 77,5/80,0  | 0,83/0,90    | 10,1/13,8            | 6,8/7,0                | 1,7/1,8               | 113        |
| K160L-6/4  | 6,5/9,5   | 965/1450 | 81,0/81,5  | 0,85/0,91    | 13,6/18,5            | 6,5/7,0                | 2,0/1,8               | 133        |
| K180L-6/4  | 10/15     | 970/1455 | 83,5/83,0  | 0,87/0,90    | 18,9/27,1            | 6,7/7,0                | 1,7/1,8               | 181        |
| K200L-6/4  | 13/19     | 970/1460 | 86,0/85,5  | 0,89/0,89    | 25,5/30,3            | 6,5/6,8                | 2,0/2,0               | 216        |
| K200LX-6/4 | 15/20     | 970/1460 | 86,5/86,0  | 0,88/0,90    | 28,4/33,6            | 7,0/7,2                | 2,0/2,1               | 225        |
| K225M-6/4  | 20/30     | 975/1465 | 89,0/89,0  | 0,90/0,92    | 36,0/45,8            | 7,0/7,1                | 2,0/1,9               | 292        |
| K250M-6/4  | 25/35     | 980/1470 | 89,0/89,5  | 0,88/0,90    | 46,1/62,7            | 7,1/7,0                | 2,2/2,0               | 408        |
| K280S-6/4  | 30/40     | 980/1480 | 89,5/90,0  | 0,88/0,89    | 55,0/72,1            | 7,2/7,4                | 2,2/2,0               | 465        |
| K280M-6/4  | 37/45     | 980/1480 | 89,0/89,5  | 0,89/0,90    | 67,4/80,6            | 7,1/7,5                | 2,3/2,1               | 540        |
| K315S-6/4  | 55/63     | 985/1485 | 90,5/90,0  | 0,87/0,89    | 101/114              | 7,2/7,2                | 2,1/1,8               | 861        |
| K315M-6/4  | 65/80     | 990/1485 | 91,0/91,5  | 0,88/0,88    | 117/143              | 7,3/7,5                | 1,9/1,9               | 940        |
| K315L-6/4  | 80/100    | 990/1485 | 91,5/91,0  | 0,87/0,89    | 145/178              | 7,1/7,6                | 2,0/2,8               | 1.110      |
| K315LX-6/4 | 100/140   | 990/1485 | 91,5/91,0  | 0,88/0,88    | 179/252              | 7,0/7,6                | 2,0/1,9               | 1.175      |

# K-series

Three-phase motors with squirrel cage, protection degree IP55

**6 / 4 POLES-1.000 / 1.500 Rpm**  
**VARIABLE TORQUE**  
**TWO SEPARATE WINDINGS**  
 380-420 V 50 Hz  
 Insulation class F

| TYPE       | Power    | Speed    | Efficiency | Power factor | Rated current (400V) | Starting current ratio         | Starting torque ratio          | Net weight |
|------------|----------|----------|------------|--------------|----------------------|--------------------------------|--------------------------------|------------|
|            | KW       | Rpm      | %          | cosφ         | Amp                  | I <sub>p</sub> /I <sub>n</sub> | M <sub>p</sub> /M <sub>n</sub> | Kg         |
| K80-6/4    | 0,2/0,5  | 965/1420 | 49,9/64,2  | 0,54/0,79    | 1,02/1,69            | 3,8/4,6                        | 3,2/2,3                        | 17         |
| K90S-6/4   | 0,3/0,75 | 965/1435 | 59,5/61,6  | 0,61/0,74    | 1,36/3,13            | 3,9/5,2                        | 2,1/2,1                        | 23         |
| K90L-6/4   | 0,4/1,1  | 935/1420 | 61,0/65,0  | 0,65/0,72    | 1,46/3,4             | 4,5/6,0                        | 2,1/1,9                        | 25         |
| K100L-6/4  | 0,5/1,5  | 965/1435 | 70,5/79,5  | 0,66/0,86    | 2,29/3,5             | 4,5/6,8                        | 2,2/2,0                        | 34         |
| K100LX-6/4 | 0,8/2,4  | 960/1420 | 70,8/78,3  | 0,70/0,87    | 2,31/5,04            | 4,5/6,0                        | 2,0/2,1                        | 38         |
| K112M-6/4  | 1/3      | 965/1460 | 74,6/77,9  | 0,67/0,71    | 2,88/7,8             | 4,8/7,0                        | 2,1/2,5                        | 44         |
| K132S-6/4  | 1,3/4,2  | 975/1460 | 79,3/82,7  | 0,66/0,81    | 4,07/9,7             | 5,9/6,5                        | 2,0/1,9                        | 61         |
| K132M-6/4  | 1,5/5,5  | 975/1455 | 79,2/84,5  | 0,70/0,86    | 5,66/11,8            | 6,4/6,5                        | 2,0/1,9                        | 73         |
| K160M-6/4  | 3/9      | 975/1465 | 82,7/86,0  | 0,68/0,79    | 8,40/21,1            | 6,7/7,7                        | 2,4/2,1                        | 113        |
| K160L-6/4  | 3,5/12   | 980/1460 | 84,7/87,8  | 0,69/0,84    | 10,8/25,3            | 7,3/7,5                        | 2,7/2,0                        | 133        |
| K180M-6/4  | 5/14     | 985/1475 | 82,2/89,2  | 0,68/0,85    | 13,9/30,5            | 6,6/7,9                        | 2,5/2,2                        | 181        |
| K180L-6/4  | 6,5/18   | 985/1470 | 85,0/89,7  | 0,73/0,86    | 15,4/37,2            | 6,9/7,5                        | 2,7/2,0                        | 190        |
| K200L-6/4  | 9/26     | 980/1475 | 86,6/90,4  | 0,79/0,87    | 19,0/47,7            | 6,2/7,8                        | 2,2/2,2                        | 232        |
| K225S-6/4  | 10/31    | 985/1480 | 88,0/90,6  | 0,78/0,89    | 25,1/61,0            | 7,8/7,1                        | 2,1/1,8                        | 287        |
| K225M-6/4  | 13/38    | 990/1475 | 88,0/90,3  | 0,77/0,89    | 29,8/71,8            | 7,7/7,3                        | 2,8/2,0                        | 322        |
| K250M-6/4  | 17/48    | 990/1475 | 88,6/92,2  | 0,88/0,94    | 33,3/83,6            | 8,8/7,1                        | 2,3/2,3                        | 408        |
| K280S-6/4  | 23/65    | 980/1475 | 86,0/91,4  | 0,87/0,89    | 44,4/121             | 7,5/7,0                        | 2,1/1,9                        | 465        |
| K280M-6/4  | 27/80    | 985/1480 | 87,5/92,7  | 0,85/0,87    | 54,3/143             | 7,4/7,5                        | 2,1/2,0                        | 540        |
| K315S-6/4  | 32/95    | 985/1480 | 87,8/93,1  | 0,81/0,88    | 69,0/167             | 7,0/7,2                        | 2,0/1,8                        | 1.002      |
| K315M-6/4  | 37/115   | 985/1485 | 88,2/93,6  | 0,80/0,90    | 81,8/197             | 6,5/6,8                        | 2,0/1,9                        | 1.070      |
| K315L-6/4  | 45/125   | 990/1485 | 88,9/93,8  | 0,89/0,80    | 91,3/216             | 6,8/7,0                        | 1,9/1,8                        | 1.181      |
| K315LX-6/4 | 55/145   | 990/1485 | 90,9/94,0  | 0,81/0,89    | 108/250              | 6,9/7,1                        | 2,0/1,8                        | 1.250      |

# K-series

Three-phase motors with squirrel cage, protection degree IP55

**8 / 6 POLES-750 / 1.000 Rpm**  
**CONSTANT TORQUE**  
**TWO SEPARATE WINDINGS**  
 380-420 V 50 Hz  
 Insulation class F

| TYPE      | Power    | Speed   | Efficiency | Power factor | Rated current (400V) | Starting current ratio         | Starting torque ratio          | Net weight |
|-----------|----------|---------|------------|--------------|----------------------|--------------------------------|--------------------------------|------------|
|           | KW       | Rpm     | %          | cosφ         | Amp                  | I <sub>p</sub> /I <sub>n</sub> | M <sub>p</sub> /M <sub>n</sub> | Kg         |
| K90S-8/6  | 0,3/0,4  | 695/945 | 62 /68     | 0,61 /0,71   | 1,1 /1,2             | 2,5/4,5                        | 1,4/1,6                        | 25         |
| K90L-8/6  | 0,4/0,6  | 695/945 | 61,9 /70,5 | 0,61 /0,72   | 1,5 /1,7             | 2,5/4,5                        | 1,6/1,8                        | 26         |
| K100L-8/6 | 0,5/0,75 | 710/950 | 70,1 /75,1 | 0,66 /0,74   | 1,5 /1,9             | 3/5                            | 1,5/1,7                        | 38         |
| K100L-8/6 | 0,7/0,9  | 710/950 | 70,5 /75,1 | 0,67 /0,74   | 2,1 /2,3             | 3,5/5,2                        | 1,6/1,7                        | 40         |
| K112M-8/6 | 1/1,4    | 715/955 | 73,5 /79   | 0,68 /0,75   | 2,8 /3,4             | 3,6/6                          | 1,8/2                          | 50         |
| K132S-8/6 | 1,5/2    | 715/960 | 78 /83,4   | 0,71 /0,75   | 3,9 /4,6             | 3,6/7                          | 1,6/2,5                        | 65         |
| K132M-8/6 | 2,2/3    | 710/960 | 78 /83,4   | 0,71 /0,76   | 5,7 /6,8             | 4/7                            | 1,7/2,3                        | 80         |
| K160M-8/6 | 4/5,5    | 720/960 | 81 /86,5   | 0,73 /0,77   | 9,8 /11,9            | 4/6,6                          | 1,7/2,8                        | 120        |
| K160L-8/6 | 5,5/7,5  | 710/960 | 82,5 /86,7 | 0,73 /0,77   | 13 /16,2             | 3,8/7                          | 1,9/3,2                        | 145        |
| K180L-8/6 | 8/11     | 720/960 | 88,3 /90   | 0,75 /0,8    | 17 /22,1             | 4/6,5                          | 2/2,5                          | 185        |
| K200L-8/6 | 14/19    | 720/960 | 90,1 /92   | 0,76 /0,81   | 29 /36,9             | 4,5/6,5                        | 2,2/2,4                        | 250        |
| K225S-8/6 | 17/20    | 720/960 | 91,3 /92,5 | 0,78 /0,83   | 34 /37,7             | 4,5/6,5                        | 2,4/2,5                        | 266        |
| K225M-8/6 | 20/27    | 725/965 | 91,2 /91   | 0,78 /0,83   | 40 /51,8             | 4,5/6,5                        | 2,1/2,3                        | 300        |
| K250M-8/6 | 24/32    | 725/965 | 91,5 /93,5 | 0,79 /0,86   | 48 /57,6             | 5/7,5                          | 2,4/2,5                        | 410        |
| K280S-8/6 | 30/40    | 730/970 | 92 /93     | 0,79 /0,86   | 59 /72,4             | 6/7,5                          | 2,4/2,5                        | 530        |
| K280M-8/6 | 40/50    | 735/970 | 92,3 /93   | 0,79 /0,86   | 79 /90,6             | 6,7/2                          | 2,2/2,4                        | 600        |
| K315S-8/6 | 50/60    | 735/980 | 94 /94     | 0,82 /0,86   | 94 /107,5            | 5,5/7,5                        | 2/2,1                          | 1.000      |
| K315M-8/6 | 60/80    | 730/980 | 94 /94     | 0,82 /0,86   | 112 /143,4           | 5/6,5                          | 1,2/1,5                        | 1.100      |
| K315M-8/6 | 70/90    | 730/980 | 94 /94     | 0,82 /0,86   | 131 /161,3           | 5/6,5                          | 1,2/1,5                        | 1.150      |
| K315L-8/6 | 80/100   | 735/980 | 94 /94     | 0,82 /0,86   | 150 /179,2           | 5/7                            | 1,2/1,5                        | 1.230      |

# K-series

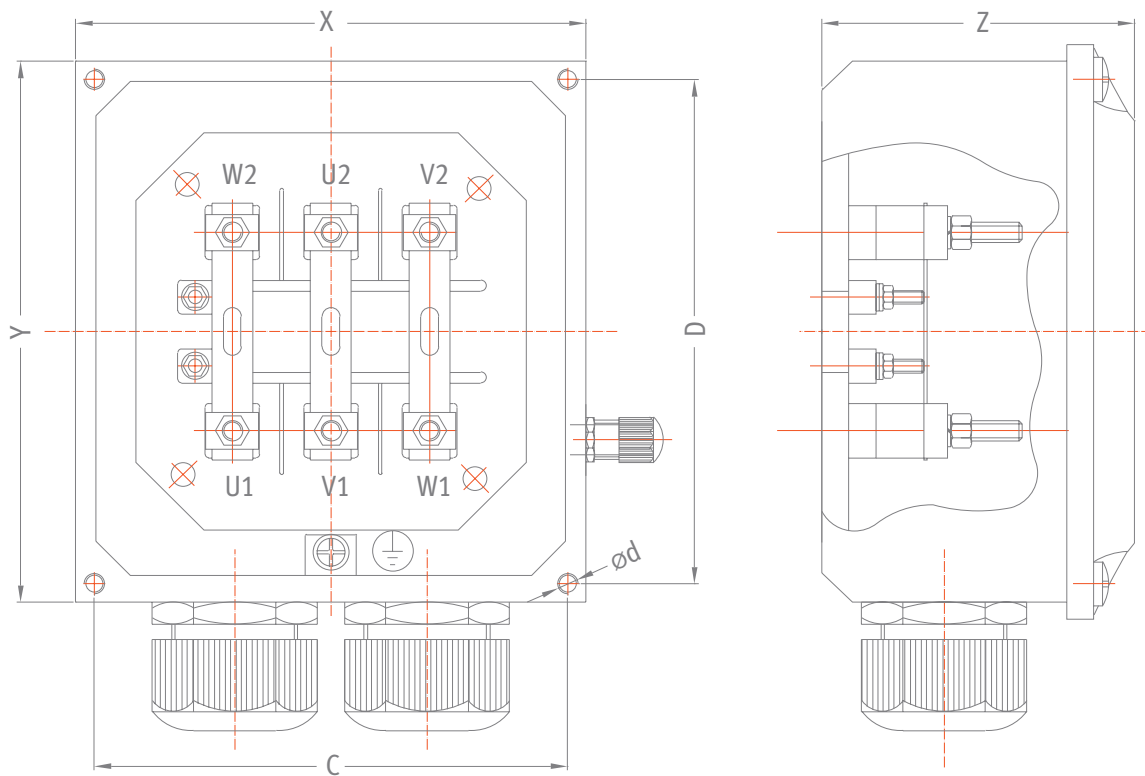
Three-phase motors with squirrel cage, protection degree IP55

**8 / 6 POLES-750 / 1.000 Rpm**  
**VARIABLE TORQUE**  
**TWO SEPARATE WINDINGS**  
 380-420 V 50 Hz  
 Insulation class F

| TYPE      | Power    | Speed   | Efficiency | Power factor | Rated current (400V) | Starting current ratio | Starting torque ratio | Net weight |
|-----------|----------|---------|------------|--------------|----------------------|------------------------|-----------------------|------------|
|           | KW       | Rpm     | %          | συφ          | Amp                  | Ip/In                  | Mp/Mn                 | Kg         |
| K90L-8/6  | 0,3/0,75 | 695/920 | 48,4 /50,5 | 0,61 /0,73   | 1,5 /2,9             | 3/3,6                  | 1,6/1,9               | 25         |
| K100L-8/6 | 0,55/1,3 | 720/950 | 50,0 /56,2 | 0,67 /0,75   | 2,4 /4,5             | 3,1/3,7                | 1,8/1,5               | 33         |
| K112M-8/6 | 0,7/1,9  | 720/950 | 52,3 /74,7 | 0,68 /0,76   | 2,9 /4,8             | 4/4,9                  | 1,6/1,9               | 45         |
| K132S-8/6 | 1,1/2,5  | 720/960 | 68,4 /71,6 | 0,7 /0,76    | 3,3 /6,7             | 4/6,1                  | 1,3/2                 | 63         |
| K132M-8/6 | 1,5/3,8  | 720/960 | 63,1 /72,6 | 0,71 /0,76   | 4,8 /10              | 4/5,5                  | 2/2,8                 | 73         |
| K160M-8/6 | 2,5/6    | 720/960 | 84,2 /89,3 | 0,73 /0,77   | 5,9 /12,6            | 6,2/6,4                | 2,4/1,8               | 120        |
| K160L-8/6 | 3,5/7,5  | 720/960 | 90,1 /87,4 | 0,74 /0,77   | 7,6 /16,1            | 6/6,4                  | 2/1,9                 | 150        |
| K180L-8/6 | 5,5/12   | 730/960 | 73,6 /84,7 | 0,76 /0,8    | 14,2 /25,6           | 5/5,5                  | 1,6/1,3               | 200        |
| K200L-8/6 | 9/20     | 730/960 | 86,0 /85,6 | 0,76 /0,81   | 20 /41,8             | 5,5/6,5                | 2,4/2,5               | 250        |
| K225S-8/6 | 11/24    | 730/970 | 86,0 /88,2 | 0,78 /0,83   | 23,7 /47,5           | 5/6,5                  | 2,3/2,8               | 280        |
| K225M-8/6 | 13/27    | 730/970 | 89,6 /90,6 | 0,79 /0,83   | 26,6 /52             | 5/6,3                  | 2,3/2,5               | 420        |
| K250M-8/6 | 15/35    | 730/970 | 91,9 /93,2 | 0,79 /0,85   | 29,9 /64             | 5,5/6,5                | 2,3/2,2               | 408        |
| K280S-8/6 | 22/45    | 730/970 | 94,4 /91,7 | 0,79 /0,85   | 42,7 /83,6           | 6,3/7                  | 2,1/2                 | 550        |
| K280M-8/6 | 25/53    | 730/970 | 94,6 /95,1 | 0,79 /0,85   | 48,4 /95             | 6,3/7                  | 2,4/2,3               | 600        |
| K315S-8/6 | 33/70    | 730/980 | 95,3 /91,3 | 0,8 /0,86    | 62,7 /129,2          | 6,2/6,9                | 1,7/1,5               | 990        |
| K315M-8/6 | 40/80    | 730/980 | 91,8 /88,6 | 0,81 /0,86   | 78 /152              | 6,2/6,9                | 1,7/1,5               | 1.080      |
| K315M-8/6 | 45/100   | 735/980 | 94,1 /95,3 | 0,81 /0,86   | 86 /176,7            | 6,3/6,7                | 1,7/1,5               | 1.100      |
| K315L-8/6 | 55/120   | 740/985 | 93,0 /92,5 | 0,82 /0,86   | 105 /218,5           | 6,5/7                  | 1,7/1,5               | 1.200      |

# K-series

## Dimension sheet



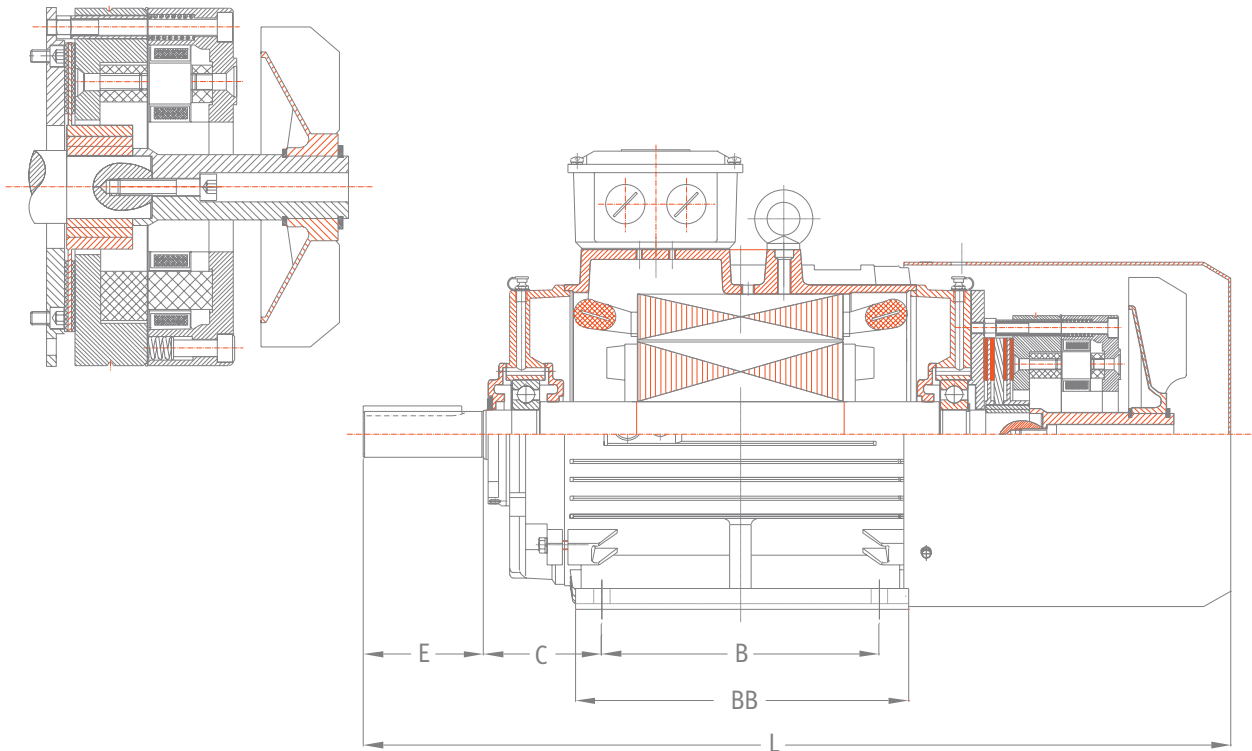
**TERMINAL BOX DIMENSIONS FOR K SERIES**  
SIZE 80-355

| TYPE         | X   | Y   | Z   | C   | D       | d   |
|--------------|-----|-----|-----|-----|---------|-----|
| K80          | 103 | 103 | 64  | 78  | 78      | M5  |
| K90<br>K100  | 110 | 110 | 71  | 86  | 86      | M5  |
| K112<br>K132 | 118 | 126 | 79  | 94  | 102     | M5  |
| K160<br>K180 | 160 | 170 | 91  | 134 | 144     | M6  |
| K200<br>K225 | 187 | 208 | 102 | 165 | 185     | M8  |
| K250<br>K280 | 217 | 246 | 115 | 193 | 222     | M8  |
| K315         | 330 | 380 | 222 | 290 | 342     | M12 |
| K355         | 348 | 477 | 285 | 60  | 158/158 | M8  |



# K-series

Dimension sheet

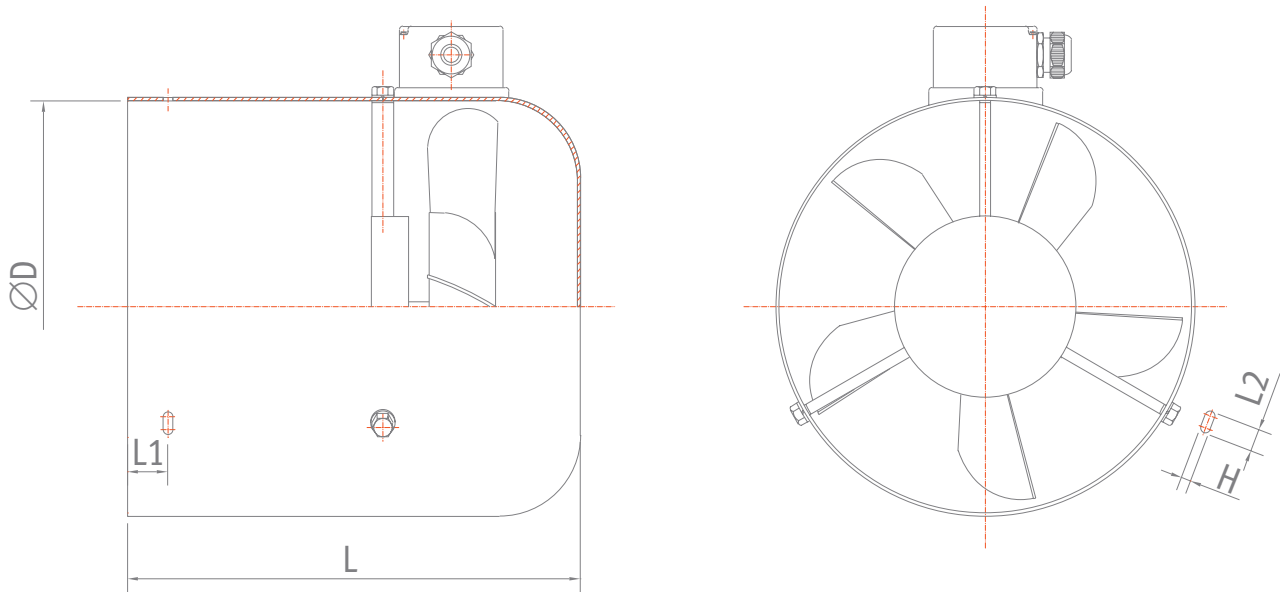


**BRAKE KITS FOR K (or AK) SERIES**  
SIZE 80-250

| TYPE           | L              | BRAKE TYPE       | Braking Torque (N.m.) |
|----------------|----------------|------------------|-----------------------|
| K80            | 364            | AC4 with kit     | 20                    |
| K90S/L         | 417\442        | AC5 with kit     | 40                    |
| K100           | 480            | AC6 with kit     | 60                    |
| K112           | 510            | AC7 with kit     | 90                    |
| K132S/M        | 580\618        | AC8 Z20 with kit | 200                   |
| K160M/L        | 750/794        | AC8D             | 400                   |
| K180M/L        | 864/902        | T180D            | 500                   |
| K200L          | 997            | T200D            | 600                   |
| K225S/M-2/M4-8 | 1052/1047/1077 | T200D            | 600                   |
| K250M          | 1117           | K10              | 500-800               |

# K-series

Dimension sheet



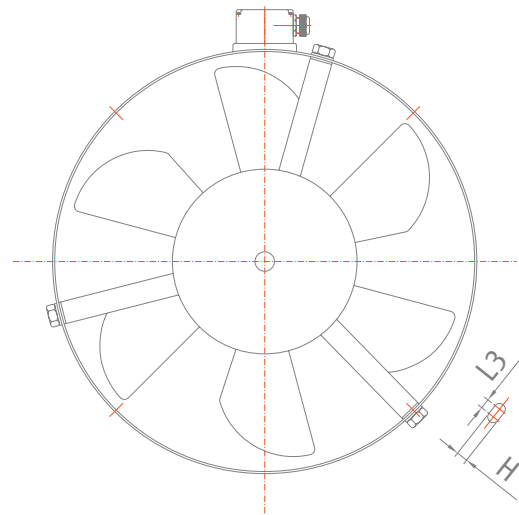
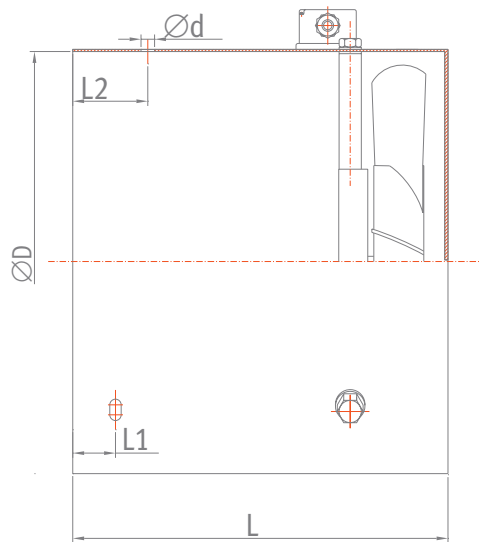
## FORCED COOLING KIT FOR K (or AK) SERIES

SIZE 80 - 132

| TYPE  | L   | L1 | L2 | H | D   |
|-------|-----|----|----|---|-----|
| K-80  | 168 | 15 | 38 | 7 | 153 |
| K-90  | 198 | 10 | 10 | 6 | 173 |
| K-100 | 198 | 15 | 10 | 6 | 193 |
| K-112 | 210 | 21 | 10 | 6 | 217 |
| K-132 | 235 | 22 | 10 | 6 | 256 |

# K-series

Dimension sheet



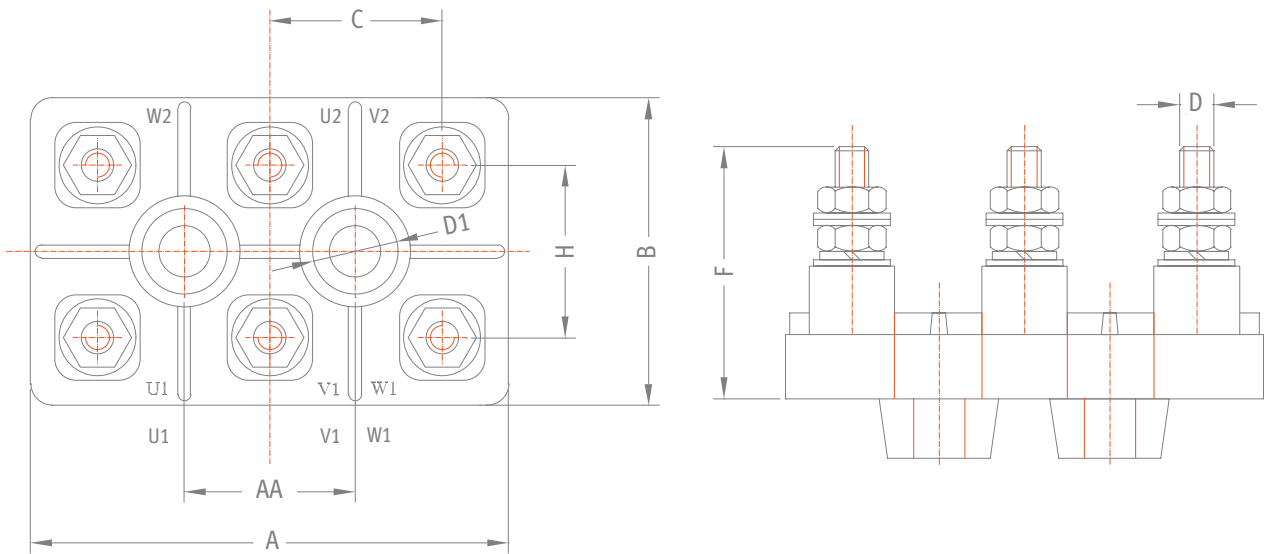
## FORCED COOLING KIT FOR K SERIES

SIZE 160 - 355

| TYPE  | L   | L1  | L2   | L3 | D   | d  | H  |
|-------|-----|-----|------|----|-----|----|----|
| K-160 | 280 | 20  | 38   | 12 | 311 | 20 | 7  |
| K-180 | 335 | 40  | 67.5 | 14 | 352 | 20 | 8  |
| K-200 | 372 | 40  | 66   | 14 | 394 | 30 | 8  |
| K-225 | 395 | 45  | 71.5 | 18 | 442 | 30 | 10 |
| K-250 | 423 | 55  | 81.5 | 18 | 481 | 30 | 10 |
| K-280 | 500 | 69  | 91.5 | 18 | 543 | 30 | 10 |
| K-315 | 595 | 75  | 150  | 25 | 619 | 30 | 12 |
| K-355 | 587 | 101 | 127  | 13 | 698 | 19 | 12 |

# K-series

## Dimension sheet



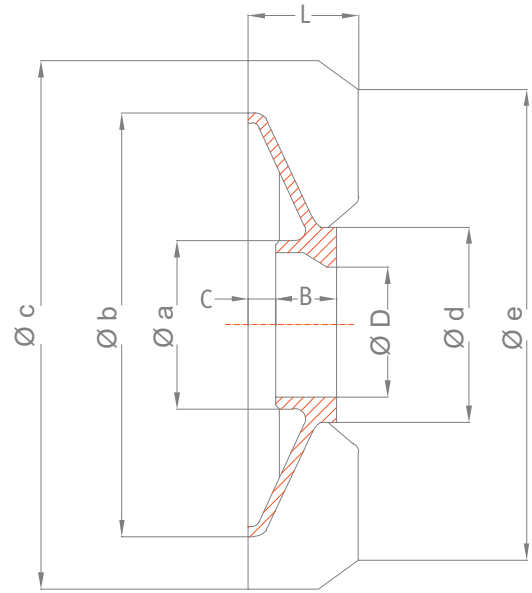
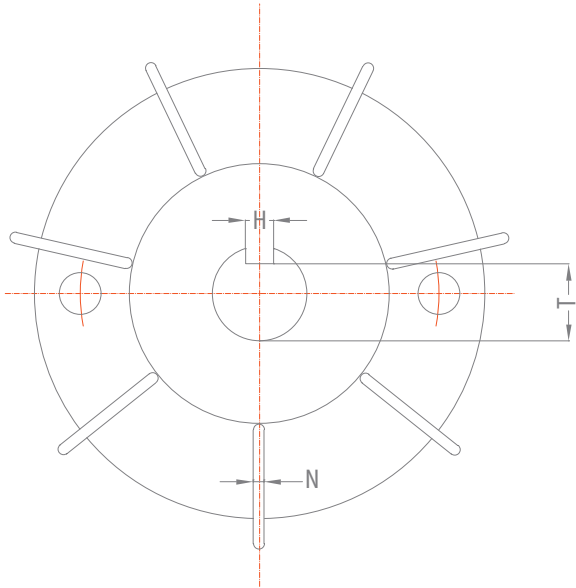
### TERMINAL PLATE

#### SIZE 80-335

| a/a | MOTOR TYPE | A   | AA | H  | B   | C  | F   | D   | D1 |
|-----|------------|-----|----|----|-----|----|-----|-----|----|
| 1   | 80         | 56  | 20 | 19 | 36  | 20 | 31  | M4  | 10 |
| 2   | 90-100     | 58  | 24 | 22 | 35  | 22 | 25  | M4  | 12 |
| 3   | 112-132    | 66  | 24 | 24 | 40  | 24 | 31  | M5  | 12 |
| 4   | 160-180    | 93  | 30 | 30 | 57  | 30 | 36  | M6  | 12 |
| 5   | 200-225    | 114 | 38 | 38 | 68  | 38 | 44  | M8  | 16 |
| 6   | 250-280    | 131 | 43 | 42 | 87  | 42 | 61  | M10 | 16 |
| 7   | 315        | 172 | 56 | 54 | 119 | 54 | 80  | M12 | 18 |
| 8   | 355        | 240 | 80 | 96 | 172 | 79 | 100 | M16 | 25 |

# K-series

## Dimension sheet



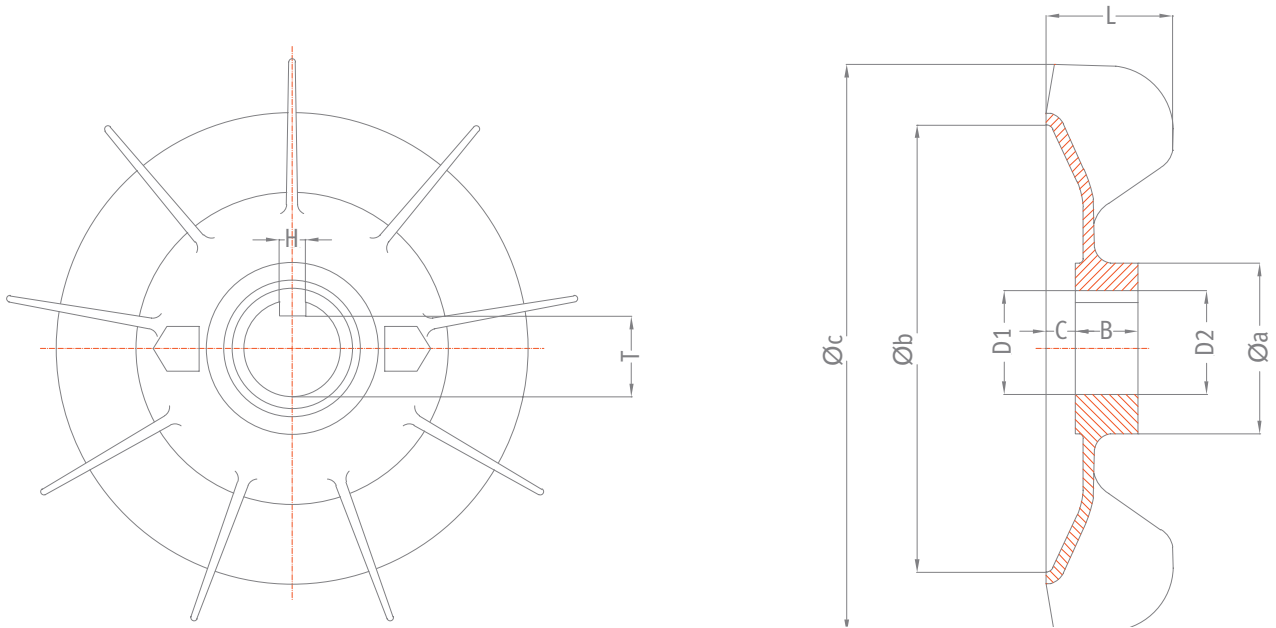
### FANS

#### SIZE 80-132, 280

| MOTOR TYPE    | Ø D  | Ø a | Ø b | Ø c | Ø d | Ø e | L   | B  | C  | H  | T    | N |
|---------------|------|-----|-----|-----|-----|-----|-----|----|----|----|------|---|
| K80-2,4,6     | 19.2 | 27  | 85  | 100 | 38  | 85  | 28  | 22 | 6  | 6  | 16   | 5 |
| K90-2         | 24.2 | 32  | 110 | 135 | 50  | 115 | 35  | 27 | 6  | 8  | 20.5 | 5 |
| K90-4,6,8     | 24.2 | 32  | 130 | 155 | 50  | 136 | 40  | 27 | 6  | 8  | 20.5 | 7 |
| K100-2,4,6    | 28.2 | 36  | 130 | 155 | 54  | 136 | 40  | 27 | 6  | 8  | 24.5 | 5 |
| K112-2        | 28.2 | 36  | 130 | 155 | 54  | 136 | 40  | 30 | 6  | 8  | 24.5 | 5 |
| K112-4,6,8    | 28.2 | 36  | 150 | 185 | 54  | 160 | 45  | 30 | 6  | 8  | 24.5 | 7 |
| K132-2        | 38.2 | 48  | 150 | 185 | 66  | 160 | 47  | 35 | 12 | 10 | 33.5 | 5 |
| K132-4,6,8    | 38.2 | 48  | 165 | 200 | 66  | 175 | 50  | 35 | 12 | 10 | 33.5 | 7 |
| K280-2        | 68   | 83  | 280 | 280 | 110 |     | 110 | 60 | 35 | 18 | 61.3 | 5 |
| K280-4,6,8,10 | 68   | 95  | 400 | 400 | 130 |     | 130 | 65 | 35 | 20 | 61.3 | 9 |

# K-series

## Dimension sheet

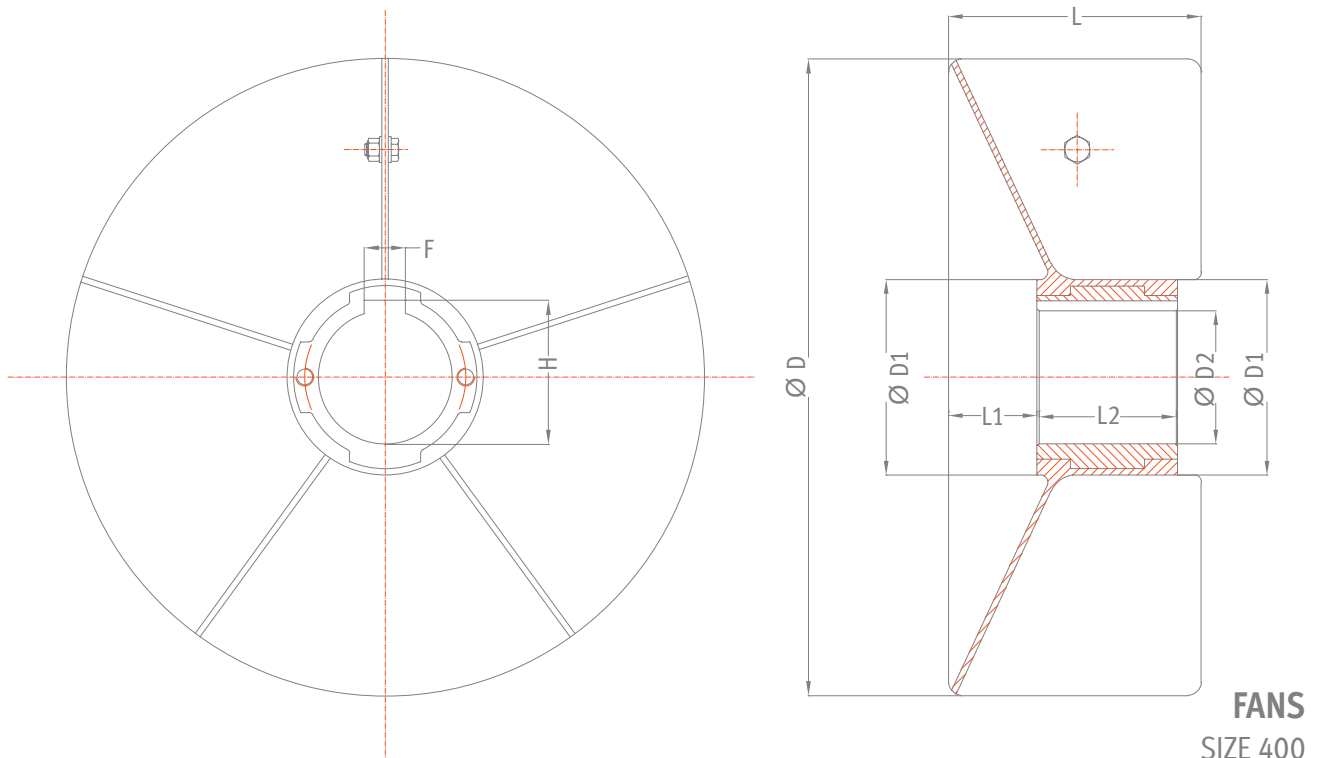


**FANS**  
SIZE 160-355

| MOTOR TYPE | Ø D1 |                | Ø D2 |                | Ø a | Ø b | Ø c | L   | B  |            | H  | T              |      | C          |    |            |
|------------|------|----------------|------|----------------|-----|-----|-----|-----|----|------------|----|----------------|------|------------|----|------------|
| K160-2     | 43   | +0.26<br>-0.05 | 43   | +0.18<br>-0.12 | 63  | 170 | 215 | 50  | 40 | 0<br>-0.62 | 12 | +0.16<br>-0.06 | 38.3 | 0<br>-0.20 | 10 | 0<br>-0.18 |
| K160-4,6   | 43   | +0.26<br>-0.05 | 43   | +0.18<br>-0.12 | 64  | 230 | 250 | 58  | 40 | 0<br>-0.62 | 12 | +0.16<br>-0.06 | 38.3 | 0<br>-0.20 | 13 | 0<br>-0.18 |
| K180-2,4   | 52   | +0.28<br>0     | 52   | +0.05<br>-0.13 | 72  | 200 | 250 | 65  | 35 | 0<br>-0.62 | 14 | +0.16<br>-0.06 | 47   | 0<br>-0.20 | 10 | 0<br>-0.18 |
| K180-6,8   | 52   | +0.28<br>0     | 52   | +0.05<br>-0.13 | 72  | 220 | 275 | 63  | 35 | 0<br>-0.62 | 14 | +0.16<br>-0.06 | 47   | 0<br>-0.20 | 11 | 0<br>-0.18 |
| K200-2,4   | 58   | +0.28<br>0     | 58   | +0.05<br>-0.13 | 94  | 210 | 260 | 75  | 40 | 0<br>-0.62 | 16 | +0.18<br>0     | 52   | 0<br>-0.20 | 10 | 0<br>-0.18 |
| K200-6,8   | 58   | +0.28<br>0     | 58   | +0.05<br>-0.13 | 94  | 240 | 295 | 75  | 40 | 0<br>-0.62 | 16 | +0.18<br>0     | 52   | 0<br>-0.20 | 11 | 0<br>-0.18 |
| K225-2     | 62   | +0.07<br>-0.15 | 62   | +0.07<br>-0.15 | 92  | 190 | 250 | 78  | 45 | 0<br>-0.62 | 16 | +0.18<br>0     | 56   | 0<br>-0.20 | 6  | 0<br>-0.12 |
| K225-4,6,8 | 62   | +0.07<br>-0.15 | 62   | +0.07<br>-0.15 | 92  | 280 | 350 | 90  | 45 | 0<br>-0.62 | 18 | +0.18<br>0     | 55   | 0<br>-0.20 | 20 | 0<br>-2.1  |
| K250-2     | 68   | +0.30<br>0     | 68   | +0.07<br>-0.15 | 104 | 220 | 250 | 80  | 45 | 0<br>-0.62 | 18 | +0.18<br>0     | 61   | 0<br>-0.20 | 4  | 0<br>-0.12 |
| K250-4,6,8 | 68   | +0.30<br>0     | 68   | +0.07<br>-0.15 | 104 | 280 | 350 | 90  | 45 | 0<br>-0.62 | 18 | ±0.215         | 61   | 0<br>-0.20 | 22 | 0<br>-2.1  |
| K315-2     | 75   | +0.046<br>0    | 75   | +0.57<br>-0.11 | 118 | 290 | 350 | 110 | 60 | 0<br>-0.19 | 18 | +0.21<br>0     | 79.4 | +0.2<br>0  | 30 | 0<br>-0.12 |
| K315-4     | 90   | +0.11<br>-0.35 | 90   | +0.57<br>-0.11 | 125 | 420 | 420 | 150 | 80 | 0<br>-0.74 | 22 | +0.21<br>0     | 81.3 | 0<br>-0.2  | 35 | 0<br>-2.1  |
| K355-2     | 75   | +0.046<br>0    | 75   | +0.57<br>-0.11 | 118 | 290 | 350 | 110 | 70 | 0<br>-0.19 | 20 | -0.21<br>0     | 67.5 | +0.2<br>0  | 30 | 0<br>-0.12 |
| K355-4     | 90   | +0.11<br>-0.35 | 90   | +0.57<br>-0.11 | 145 | 450 | 570 | 110 | 70 | 0<br>-0.74 | 25 | +0.21<br>0     | 81.3 | 0<br>-0.2  | 10 | 0<br>-2.1  |

# K-series

## Dimension sheet



| MOTOR TYPE | Ø D | Ø D1 | Ø D2 | F   | H        | L     | L1                                      | L2    |    |  |     |  |
|------------|-----|------|------|---|----------|-------|---|-------|----|--|-----|--|
| K400-2     | 410 | 132  | 90   | $\begin{matrix} +0.054 \\ 0 \end{matrix}$ | 25±0.026 | 96.4  | $\begin{matrix} +0.2 \\ 0 \end{matrix}$ | 171±1 | 60 | $\begin{matrix} 0 \\ -0.19 \end{matrix}$ | 95  | $\begin{matrix} 0 \\ -0.22 \end{matrix}$ |
| K400-4,6   | 500 | 159  | 110  | $\begin{matrix} +0.054 \\ 0 \end{matrix}$ | 28±0.026 | 116.4 | $\begin{matrix} +0.2 \\ 0 \end{matrix}$ | 233±1 | 74 | $\begin{matrix} 0 \\ -0.19 \end{matrix}$ | 145 | $\begin{matrix} 0 \\ -0.22 \end{matrix}$ |



ATHENS: 18, Gr. Lambraki Str., 141 23 Likovrisi – tel: +30 2102817217, fax : +30 2102814277

THESSALONIKI: Industrial Area of Sindos., O.T. 48B, 15th Str., 570 22

tel: +30 2310796646 – fax: +30 2310796645

e-mail: [valiadis@valiadis.gr](mailto:valiadis@valiadis.gr) – <https://www.valiadis.gr>

ROMANIA: 1, Aleea Meseriasilor, Bloc C93, Etaj 2, Ap. 16, Sector 6, 061647-Bucharest

tel: +40 214135902 – e-mail: [romania@valiadis.gr](mailto:romania@valiadis.gr) – <https://www.ac-motors.eu>